

12HCX76 8 Ω

- 700 W continuous program power capacity
- 60°x40° nominal coverage
- 45 - 18000 Hz response
- 99 dB sensitivity
- Single Neodymium magnet assembly
- Modified exponential horn flare for improved acoustic loading and controlled coverage
- 33 mm (1.3") HF unit exit diameter



12HCX76 8 Ω

GENERAL

| | |
|--------------------------------|-------------------------|
| Nominal Diameter | 320 mm (12 in) |
| Nominal Impedance | 8 Ω |
| Frequency Range | 45 Hz - 18000 Hz |
| Dispersion Angle | 60 ° |
| Included by -6 dB down points. | |

PARAMETERS

| | |
|------|---|
| Fs | 42 Hz |
| Re | 5 Ω |
| Qes | 0.2 |
| Qms | 8 |
| Qts | 0.19 |
| Vas | 120 dm³ (4.2 ft³) |
| Sd | 522 cm² (80.9 in²) |
| η0 | 4.1 % |
| Xvar | 6 mm |
| Mms | 47 g |
| Bl | 17.6 Tm |
| Le | 0.8 mH |
| EBP | 210 Hz |

SPECIFICATIONS HF UNIT

| | |
|---|-----------------------|
| Nominal Diameter | 320 mm (12 in) |
| Nominal Impedance | 8 Ω |
| Minimum Impedance | 8 Ω |
| Nominal Power Handling | 80 W |
| 2 hour test made with continuous pink noise signal within the range from the recommended crossover frequency to 20 kHz. Power calculated on rated minimum impedance. Loudspeaker in free air. | |
| Continuous Power Handling | 160 W |
| Power on Continuous Program is defined as 3 dB greater than the Nominal rating. | |
| Sensitivity | 107 dB |
| Applied RMS Voltage is set to 2.83V. | |
| Recommended Crossover | 1.2 kHz |
| 12 dB/oct. or higher slope high-pass filter. | |
| Voice Coil Diameter | 75 mm (3 in) |
| Winding Material | Aluminium |
| Inductance | 0.14 mH |
| Flux Density | 1.9 T |
| Diaphragm Material | Titanium |

SPECIFICATIONS LF UNIT

| | |
|---|---------------------------------|
| Nominal Diameter | 320 mm (12 in) |
| Nominal Impedance | 8 Ω |
| Minimum Impedance | 6.7 Ω |
| Nominal Power Handling | 350 W |
| 2 hours test made with continuous pink noise signal within the range Fs-10Fs. Power calculated on rated minimum impedance. Loudspeaker in free air. | |
| Continuous Power Handling | 700 W |
| Power on Continuous Program is defined as 3 dB greater than the Nominal rating. | |
| Sensitivity | 99 dB |
| Applied RMS Voltage is set to 2.83V. | |
| Voice Coil Diameter | 76 mm (3 in) |
| Winding Material | Copper |
| Former Material | Glass Fibre |
| Winding Depth | 16.5 mm (0.65 in) |
| Magnetic Gap Depth | 8 mm (0.31 in) |
| Flux Density | 1.15 T |
| Woofer Cone Treatment | WP Waterproof Front Side |

DESIGN

| | |
|-----------------------|---------------------------------|
| Magnet Material | Neodymium Ring |
| Woofer Cone Treatment | WP Waterproof Front Side |

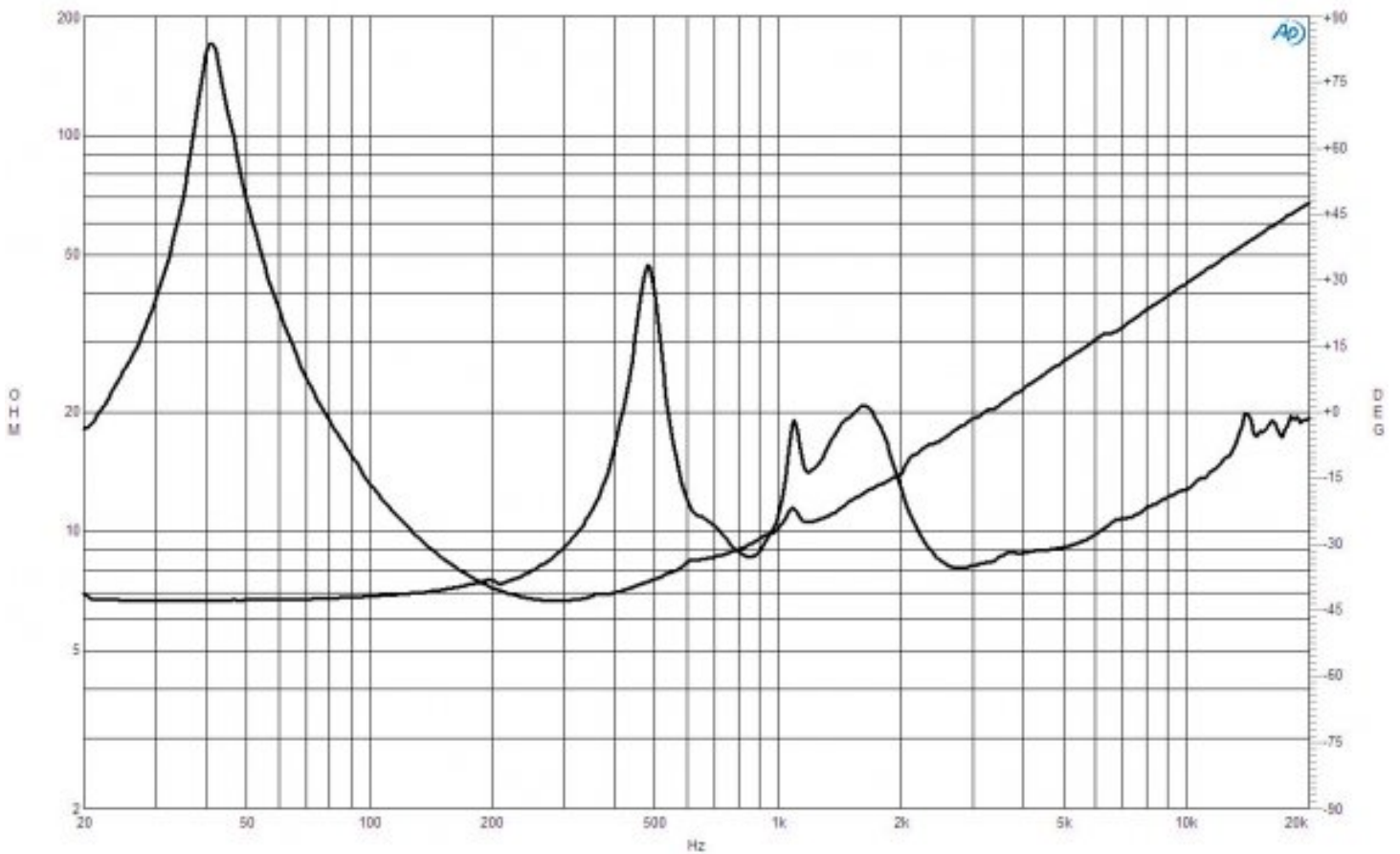
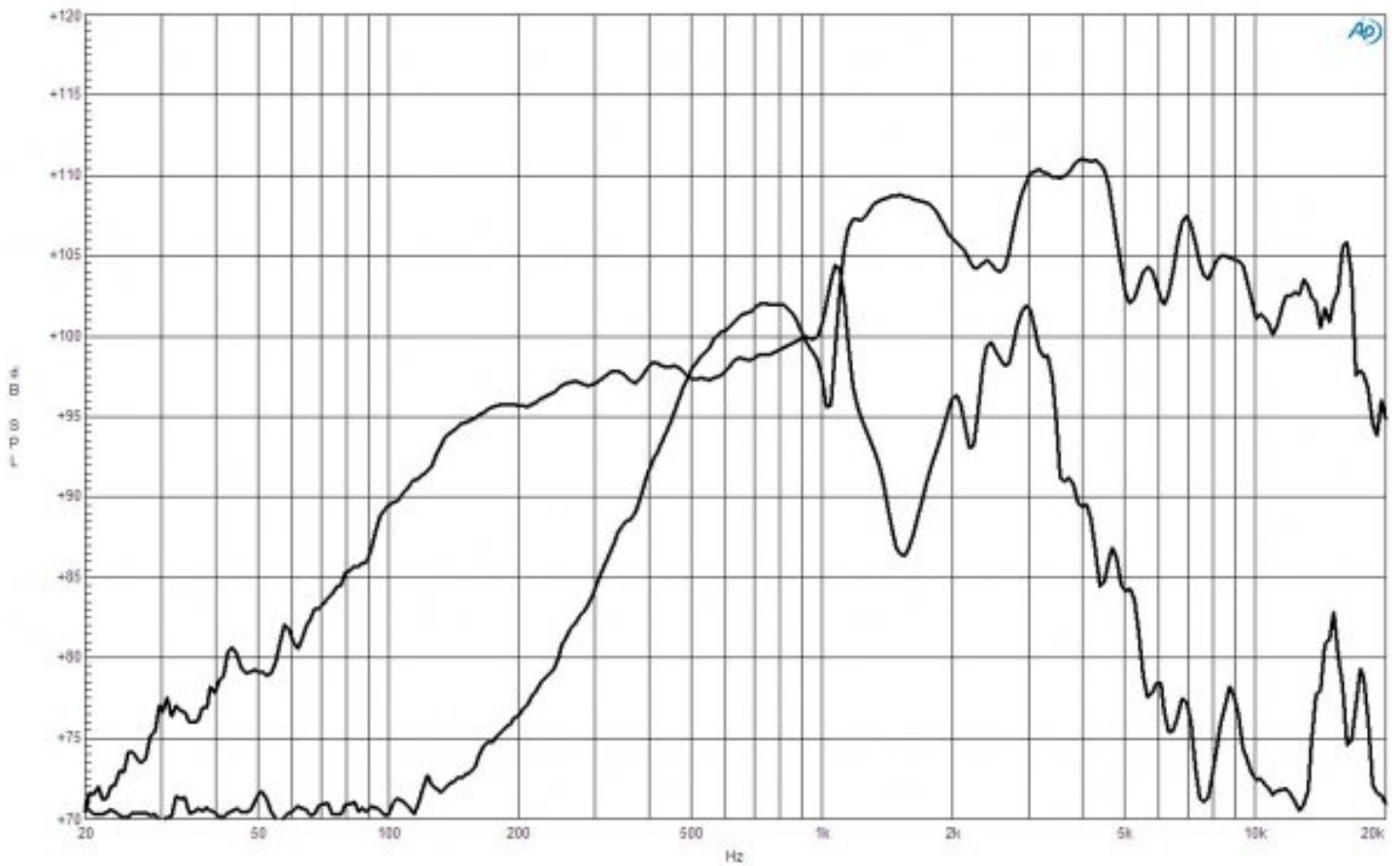
MOUNTING AND SHIPPING INFO

| | |
|-----------------------------|---|
| Overall Diameter | 315 mm (12.4 in) |
| Bolt Circle Diameter | 298 mm (11.7 in) |
| Baffle Cutout Diameter | 283 mm (11.14 in) |
| Depth | 168 mm (6.6 in) |
| Flange and Gasket Thickness | 14 mm (0.55 in) |
| Net Weight | 5.3 kg (11.68 lb) |
| Shipping Units | 1 pcs |
| Shipping Weight | 6.6 kg (14.55 lb) |
| Shipping Box | 425x425x224 mm (16.73x16.73x8.82 in) |

SERVICE KITS

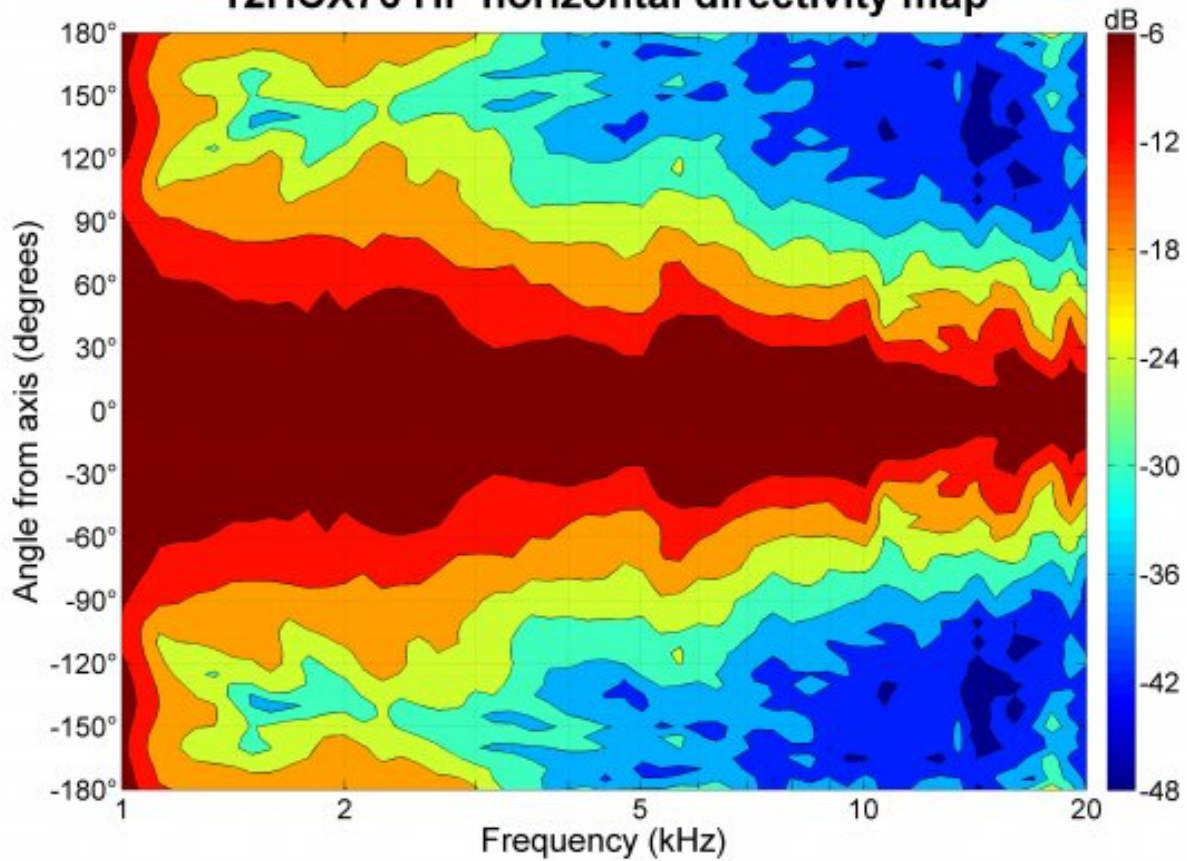
| | |
|--------------------------|--------------------|
| HF replacement-diaphragm | MMD3BTN8M |
| LF recone-kits | RCK12HCX768 |

12HCX76 8 Ω

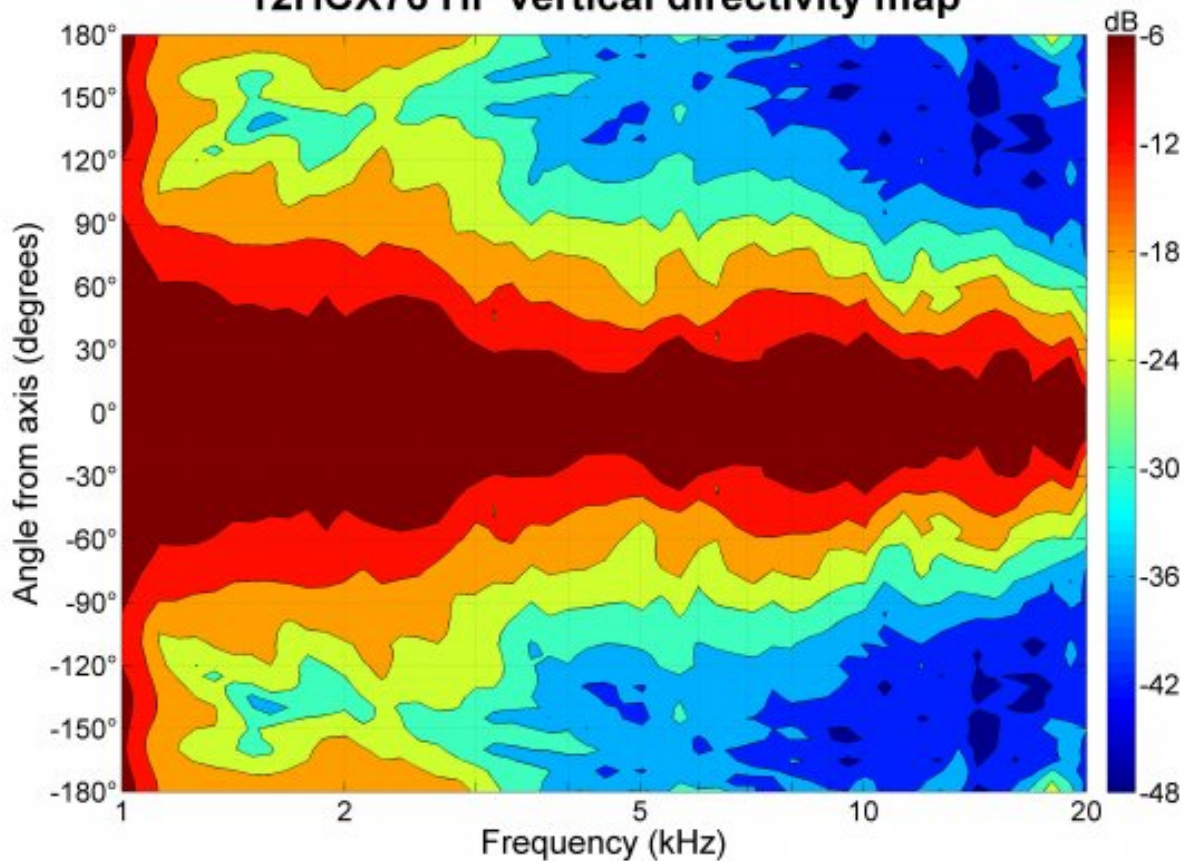


12HCX76 8 Ω

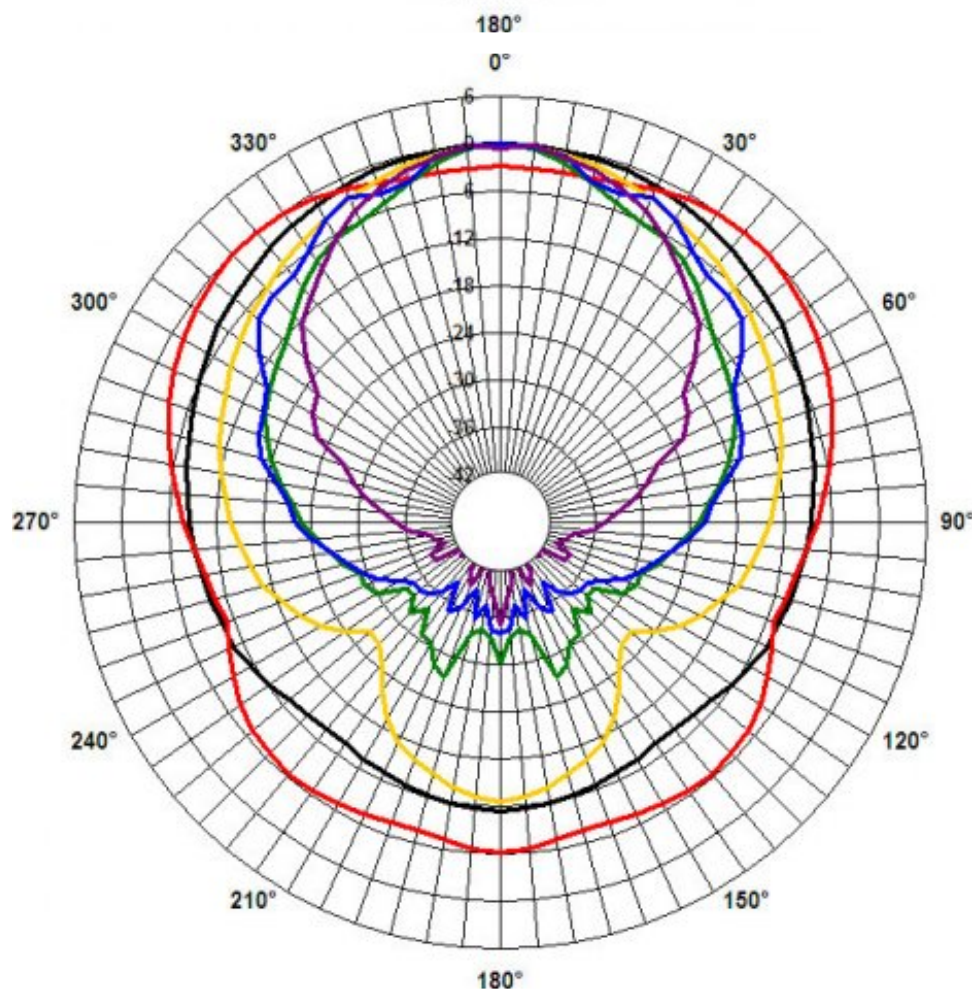
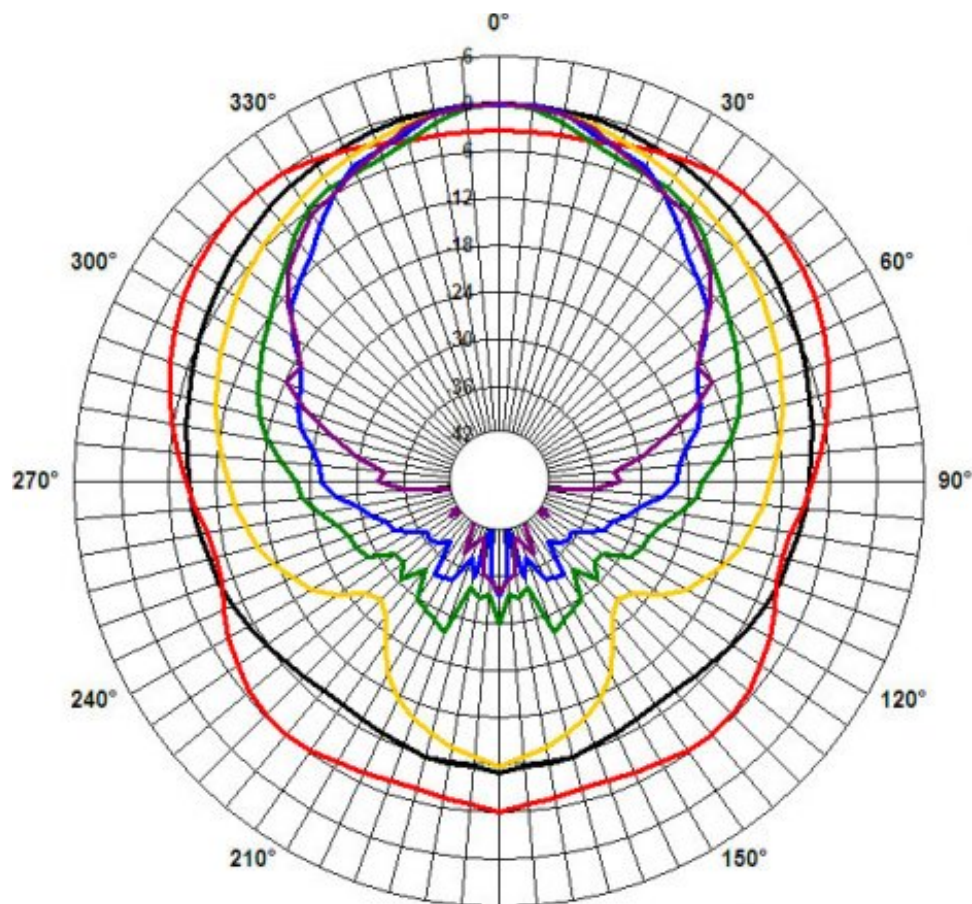
12HCX76 HF horizontal directivity map



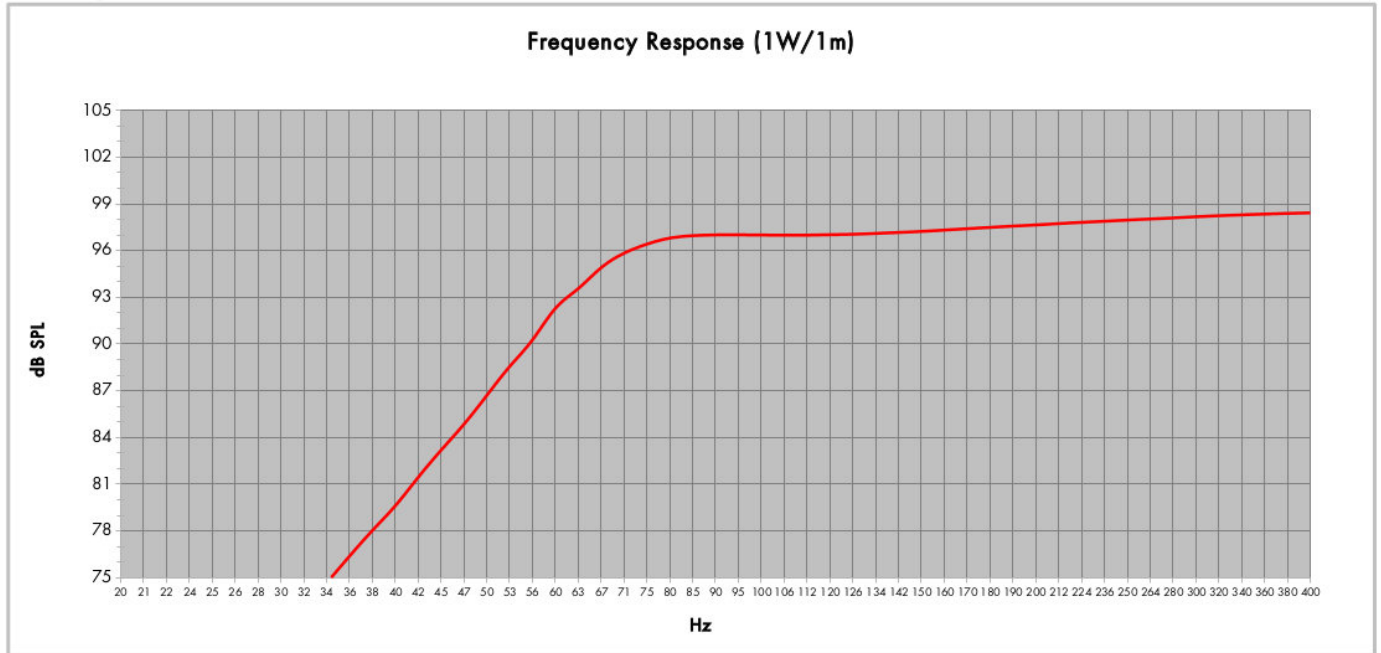
12HCX76 HF vertical directivity map



12HCX76 8 Ω



12HCX76 8 Ω



| | | | |
|-------------------------------|--------------------|-------------------------------|-------------------|
| Model: | 12HCX76 | Configuration: | One Driver |
| Enclosure Type: | Bass Reflex | | |
| Internal Net Volume (Litres): | 40 | QB: | 7 |
| Tuning Frequency (Hz): | 65 | Port Area (cm ²): | 138,7 |
| Frequency (-3 dB) (Hz): | 70,9 | Port Length (cm): | 13,1 |

12HCX76 8 Ω

