

**15CLX64** 8 Ω

- 500 W continuous program power capacity
- 80° nominal coverage
- 40 - 17000 Hz response
- 95.2 dB sensitivity
- Single Neodymium magnet assembly
- Aluminum demodulating ring for very low distortion

The CLX series products incorporate a heavy-gauge metal basket construction paired with a cost-optimized single neodymium magnet motor design for enhanced structural integrity and efficiency. This coaxial solution combines a light-weight woofer with a high-fidelity HF driver, enabling balanced acoustic output across the frequency spectrum. This configuration minimizes overall system weight while maximizing performance metrics, allowing audio engineers to develop solutions with superior cost-to-performance ratios suitable for compact, high-value applications.



**15CLX64** 8 Ω**GENERAL**

Nominal Diameter	<b>380 mm (15 in)</b>
Nominal Impedance	<b>8 Ω</b>
Frequency Range	<b>40 Hz - 17000 Hz</b>
Dispersion Angle	<b>80 °</b>
Included by -6 dB down points.	

**PARAMETERS**

Fs	<b>37 Hz</b>
Re	<b>5.5 Ω</b>
Qes	<b>0.81</b>
Qms	<b>9.4</b>
Qts	<b>0.75</b>
Vas	<b>227 dm<sup>3</sup> (8.02 ft<sup>3</sup>)</b>
Sd	<b>855 cm<sup>2</sup> (132.5 in<sup>2</sup>)</b>
η0	<b>1.44 %</b>
Xmax	<b>5.3 mm</b>
Xvar	<b>8 mm</b>
Mms	<b>82 g</b>
Bl	<b>11.5 Tm</b>
Le	<b>1.05 mH</b>
EBP	<b>46 Hz</b>

**SPECIFICATIONS HF UNIT**

Nominal Diameter	<b>380 mm (15 in)</b>
Nominal Impedance	<b>8 Ω</b>
Minimum Impedance	<b>7.9 Ω</b>
Nominal Power Handling	<b>70 W</b>
2 hour test made with continuous pink noise signal within the range from the recommended crossover frequency to 20 kHz. Power calculated on rated minimum impedance. Loudspeaker in free air.	
Continuous Power Handling	<b>140 W</b>
Power on Continuous Program is defined as 3 dB greater than the Nominal rating.	
Sensitivity	<b>106 dB</b>
Applied RMS Voltage is set to 2.83V.	
Frequency Range	<b>1 kHz - 17 kHz</b>
Recommended Crossover	<b>1.2 kHz</b>
12 dB/oct. or higher slope high-pass filter.	
Voice Coil Diameter	<b>51 mm (2 in)</b>
Winding Material	<b>Aluminium</b>
Inductance	<b>0.14 mH</b>
Flux Density	<b>1.6 T</b>
Diaphragm Material	<b>HT Polymer</b>

**SPECIFICATIONS LF UNIT**

Nominal Diameter	<b>380 mm (15 in)</b>
Nominal Impedance	<b>8 Ω</b>
Minimum Impedance	<b>6.2 Ω</b>
Nominal Power Handling	<b>250 W</b>
2 hours test made with continuous pink noise signal within the range Fs-10Fs. Power calculated on rated minimum impedance. Loudspeaker in free air.	
Continuous Power Handling	<b>500 W</b>
Power on Continuous Program is defined as 3 dB greater than the Nominal rating.	
Sensitivity	<b>95.2 dB</b>
Sensitivity at 2.83V/1m is calculated based on declared ·0and Re values.	
Voice Coil Diameter	<b>64 mm (2.5 in)</b>
Winding Material	<b>Copper</b>
Former Material	<b>Glass Fibre</b>
Winding Depth	<b>14.5 mm (0.57 in)</b>
Magnetic Gap Depth	<b>8 mm (0.31 in)</b>
Flux Density	<b>0.9 T</b>

**DESIGN**

Surround Shape	<b>Triple Roll</b>
Magnet Material	<b>Neodymium Ring</b>
Spider	<b>Single</b>
Woofer Cone Treatment	<b>WP Waterproof Front Side</b>

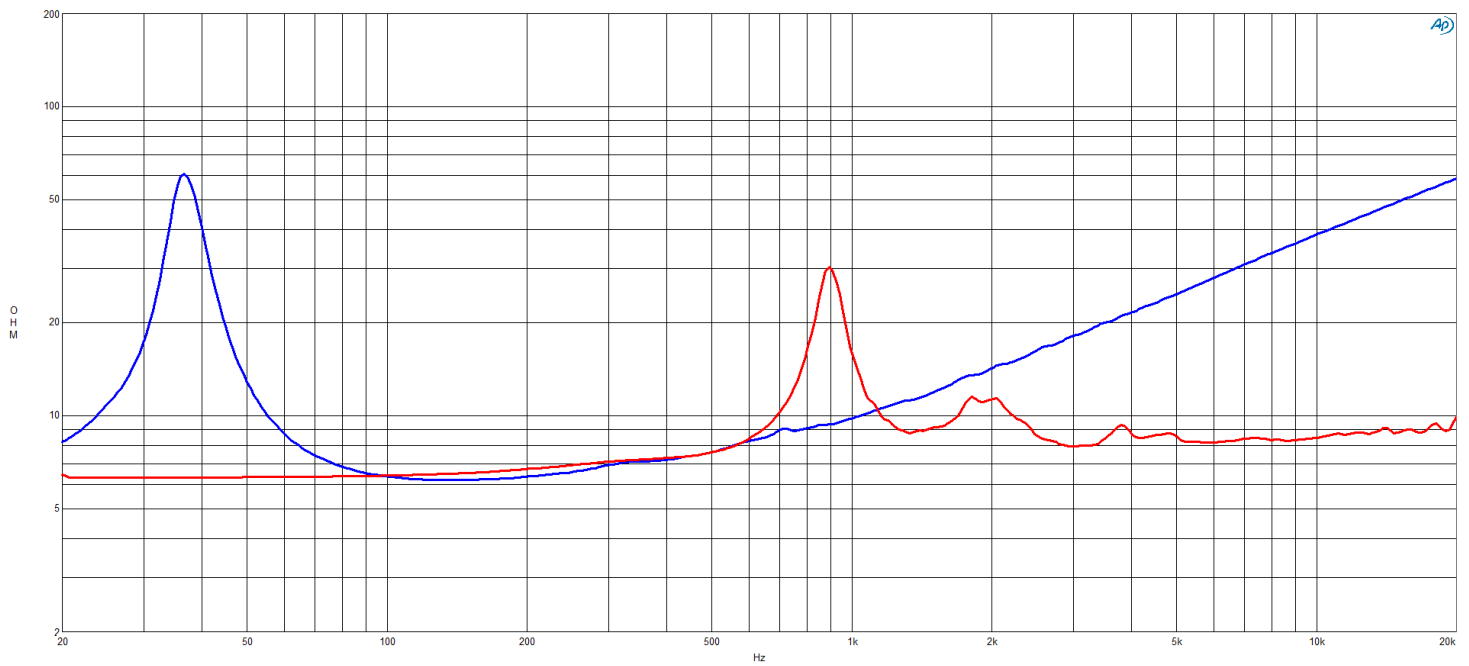
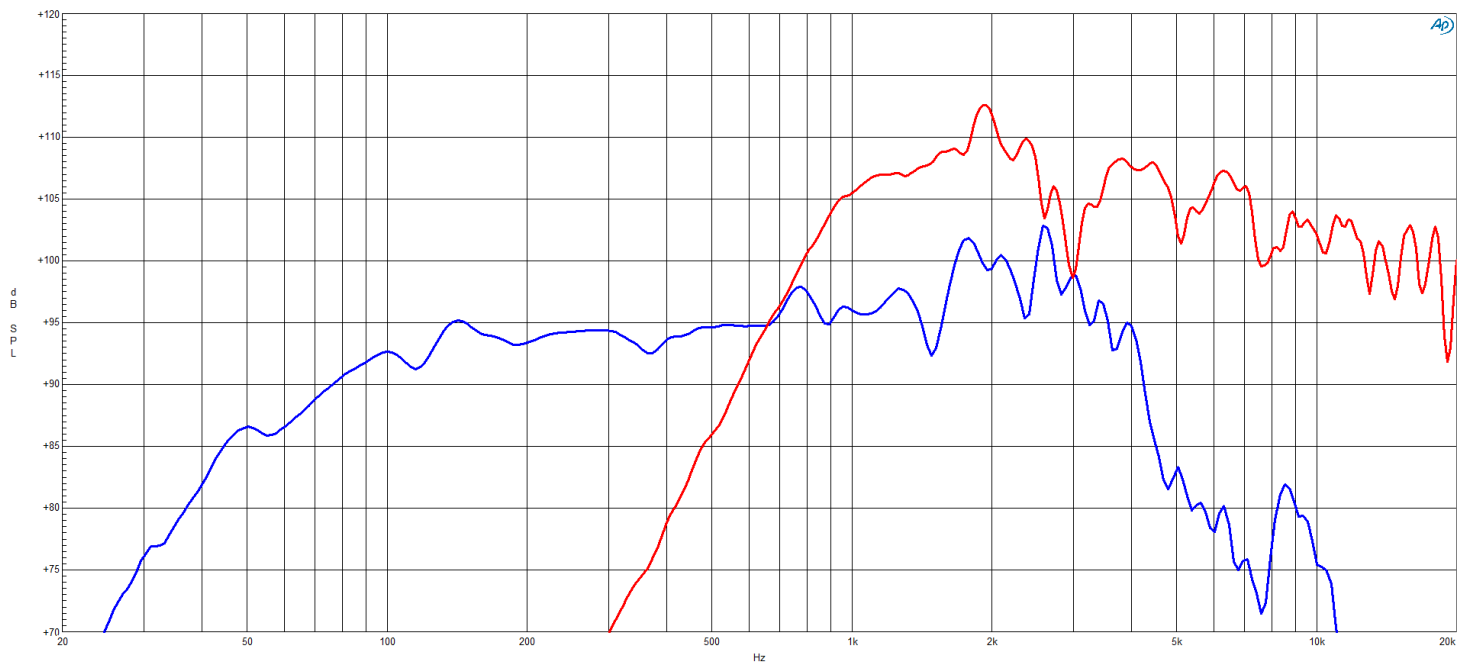
**MOUNTING AND SHIPPING INFO**

Overall Diameter	<b>388 mm (15.3 in)</b>
Bolt Circle Diameter	<b>372 mm (14.65 in)</b>
Baffle Cutout Diameter	<b>353 mm (13.9 in)</b>
Depth	<b>192 mm (7.56 in)</b>
Flange and Gasket Thickness	<b>10 mm (0.39 in)</b>
Net Weight	<b>3.8 kg (8.38 lb)</b>

**SERVICE KITS**

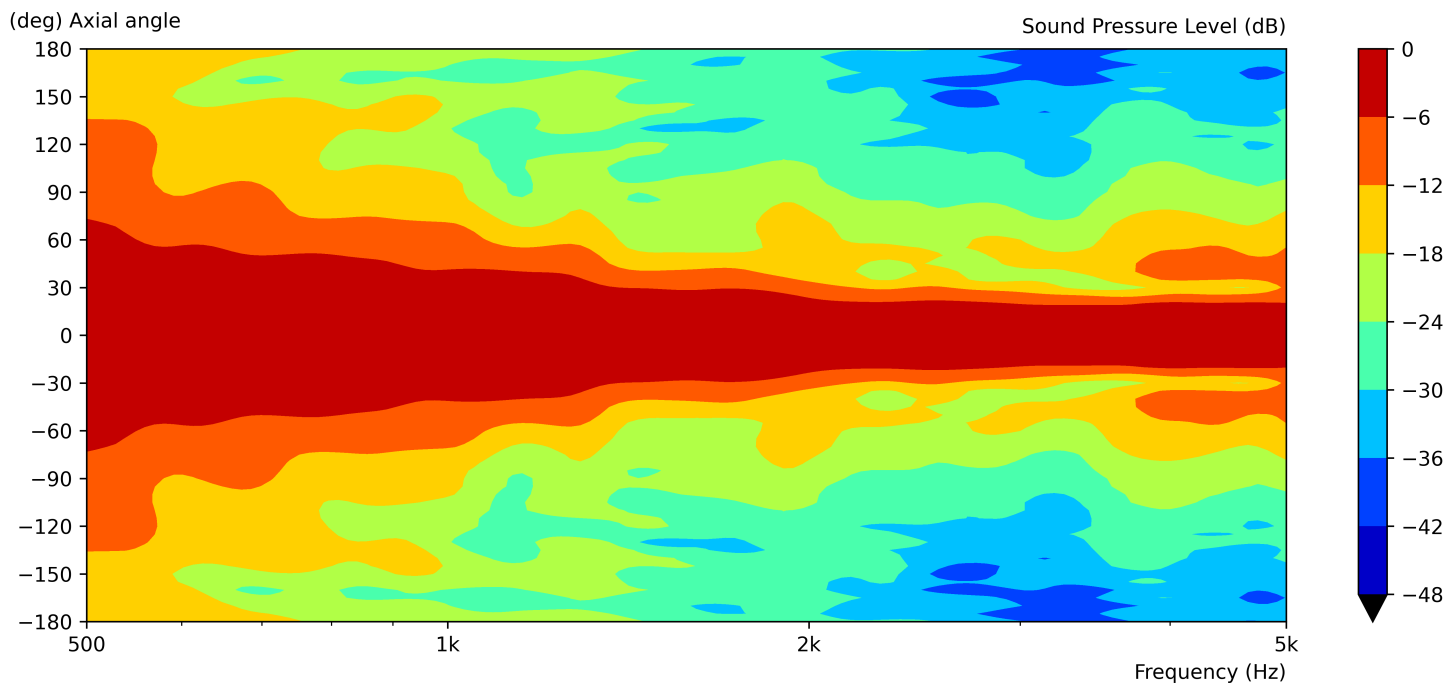
HF replacement-diaphragm	<b>MMD5508</b>
--------------------------	----------------

## 15CLX64 8 Ω

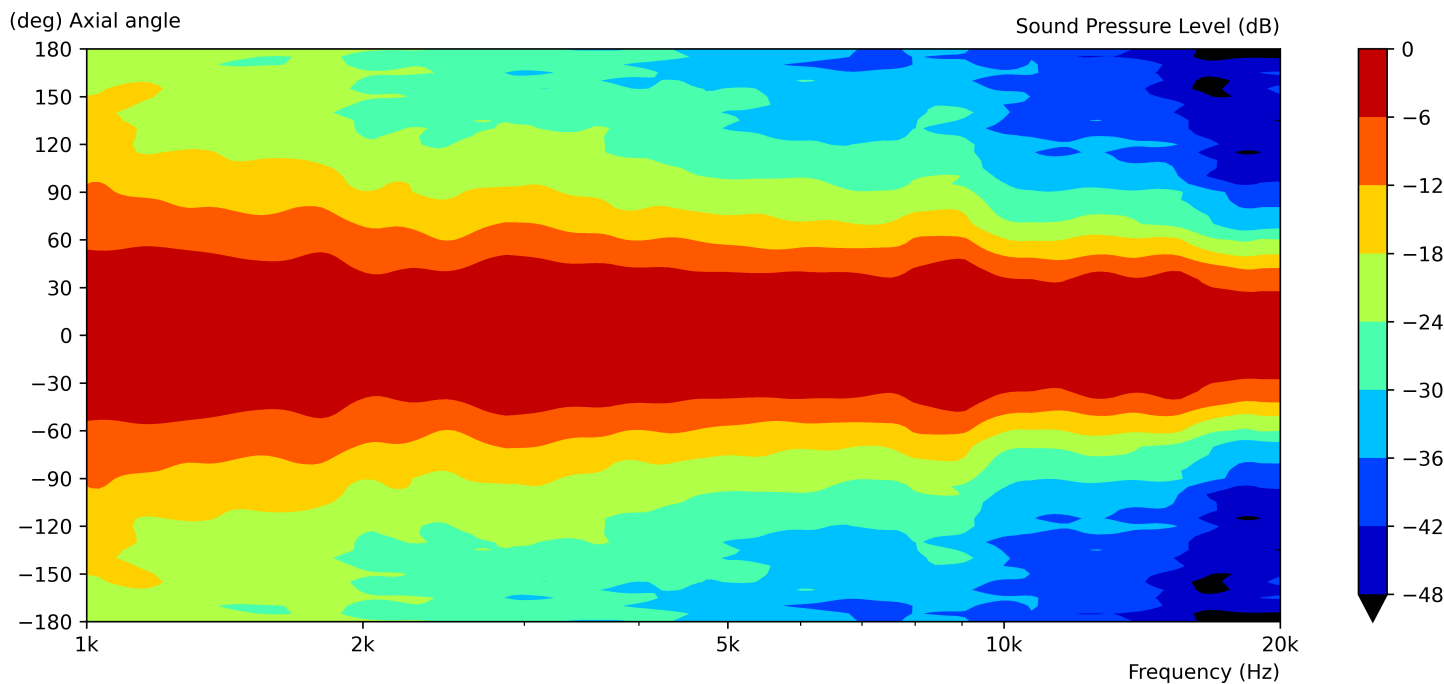


15CLX64 8 Ω

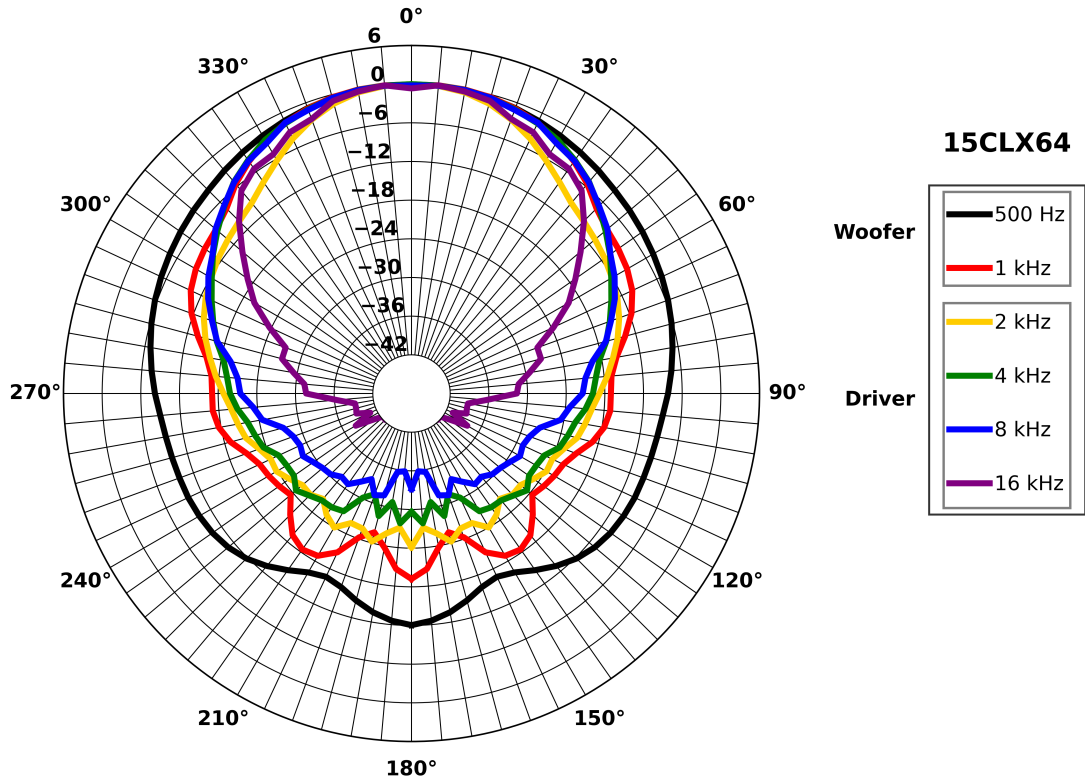
15CLX64 LF Directivity Map



15CLX64 HF Directivity Map



15CLX64 8 Ω



15CLX64 8 Ω

