

## 15CXN76 8 Ω

- 800 W continuous program power capacity
- 80° nominal coverage
- 40 - 18000 Hz response
- 99 dB sensitivity
- Single Neodymium magnet assembly
- Compatible with FB15CX40 crossover network



## 15CXN76 8 Ω

## GENERAL

Nominal Diameter	<b>380 mm (15 in)</b>
Nominal Impedance	<b>8 Ω</b>
Frequency Range	<b>40 Hz - 18000 Hz</b>
Dispersion Angle	<b>80 °</b>
Included by -6 dB down points.	

## PARAMETERS

Fs	<b>38 Hz</b>
Re	<b>5.1 Ω</b>
Qes	<b>0.3</b>
Qms	<b>5.8</b>
Qts	<b>0.28</b>
Vas	<b>246 dm<sup>3</sup> (8.6 ft<sup>3</sup>)</b>
Sd	<b>855 cm<sup>2</sup> (132.5 in<sup>2</sup>)</b>
η0	<b>3.7 %</b>
Xvar	<b>6 mm</b>
Mms	<b>82 g</b>
Bl	<b>17.8 Tm</b>
Le	<b>0.9 mH</b>
EBP	<b>127 Hz</b>

## SPECIFICATIONS HF UNIT

Nominal Diameter	<b>380 mm (15 in)</b>
Nominal Impedance	<b>8 Ω</b>
Minimum Impedance	<b>8 Ω</b>
Nominal Power Handling	<b>80 W</b>
2 hour test made with continuous pink noise signal within the range from the recommended crossover frequency to 20 kHz. Power calculated on rated minimum impedance. Loudspeaker in free air.	
Continuous Power Handling	<b>160 W</b>
Power on Continuous Program is defined as 3 dB greater than the Nominal rating.	
Sensitivity	<b>105 dB</b>
Applied RMS Voltage is set to 2.83V.	
Recommended Crossover	<b>1.2 kHz</b>
12 dB/oct. or higher slope high-pass filter.	
Voice Coil Diameter	<b>75 mm (3 in)</b>
Winding Material	<b>Aluminium</b>
Inductance	<b>0.14 mH</b>
Flux Density	<b>1.9 T</b>
Diaphragm Material	<b>Polyester/Titanium</b>

## SPECIFICATIONS LF UNIT

Nominal Diameter	<b>380 mm (15 in)</b>
Nominal Impedance	<b>8 Ω</b>
Minimum Impedance	<b>6 Ω</b>
Nominal Power Handling	<b>400 W</b>
2 hours test made with continuous pink noise signal within the range Fs-10Fs. Power calculated on rated minimum impedance. Loudspeaker in free air.	
Continuous Power Handling	<b>800 W</b>
Power on Continuous Program is defined as 3 dB greater than the Nominal rating.	
Sensitivity	<b>99 dB</b>
Applied RMS Voltage is set to 2.83V.	
Voice Coil Diameter	<b>76 mm (3 in)</b>
Winding Material	<b>Copper</b>
Former Material	<b>Glass Fibre</b>
Winding Depth	<b>16.5 mm (0.65 in)</b>
Magnetic Gap Depth	<b>8 mm (0.31 in)</b>
Flux Density	<b>1.15 T</b>
Woofer Cone Treatment	<b>WP Waterproof Front Side</b>

## DESIGN

Magnet Material	<b>Neodymium Ring</b>
Woofer Cone Treatment	<b>WP Waterproof Front Side</b>

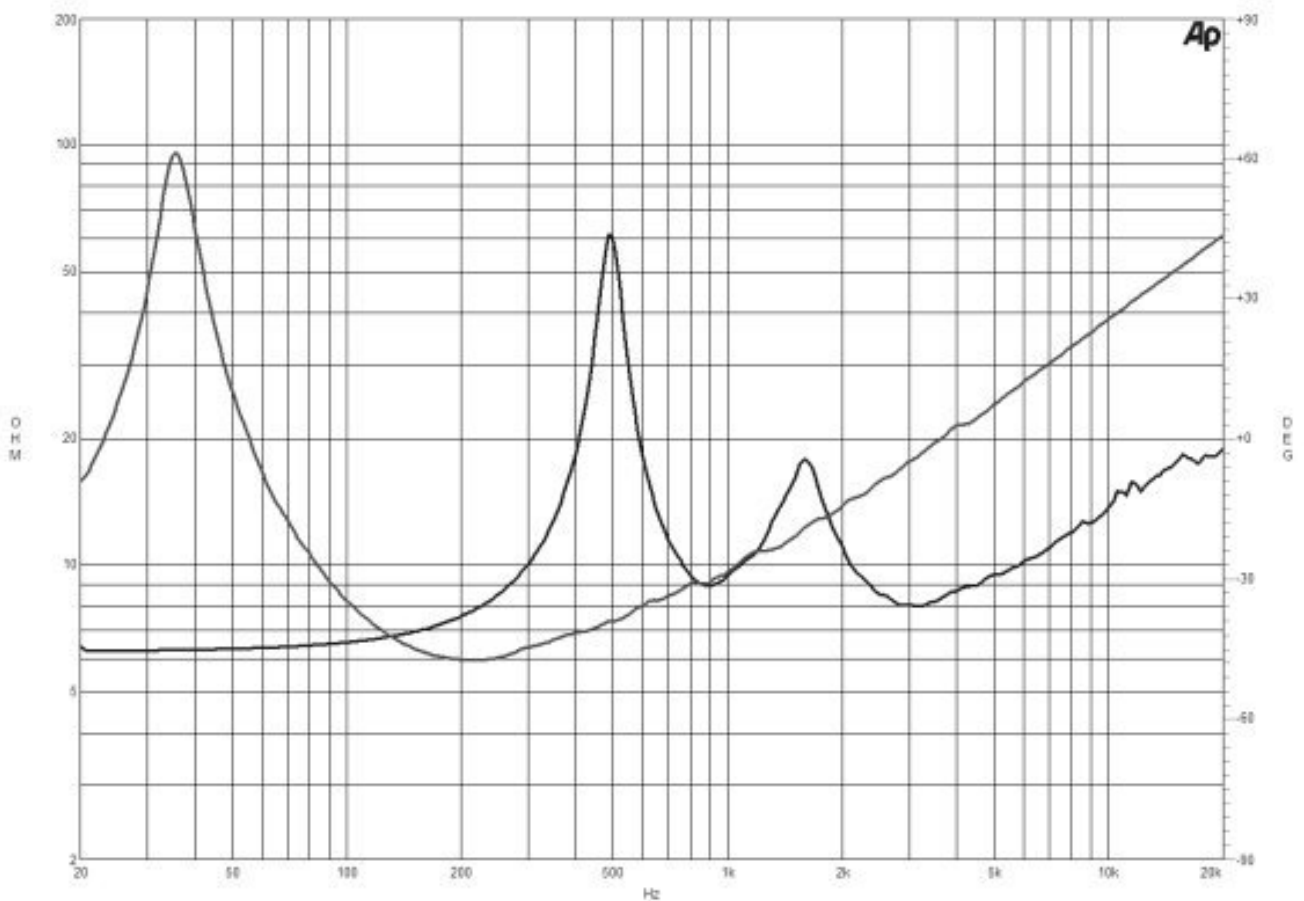
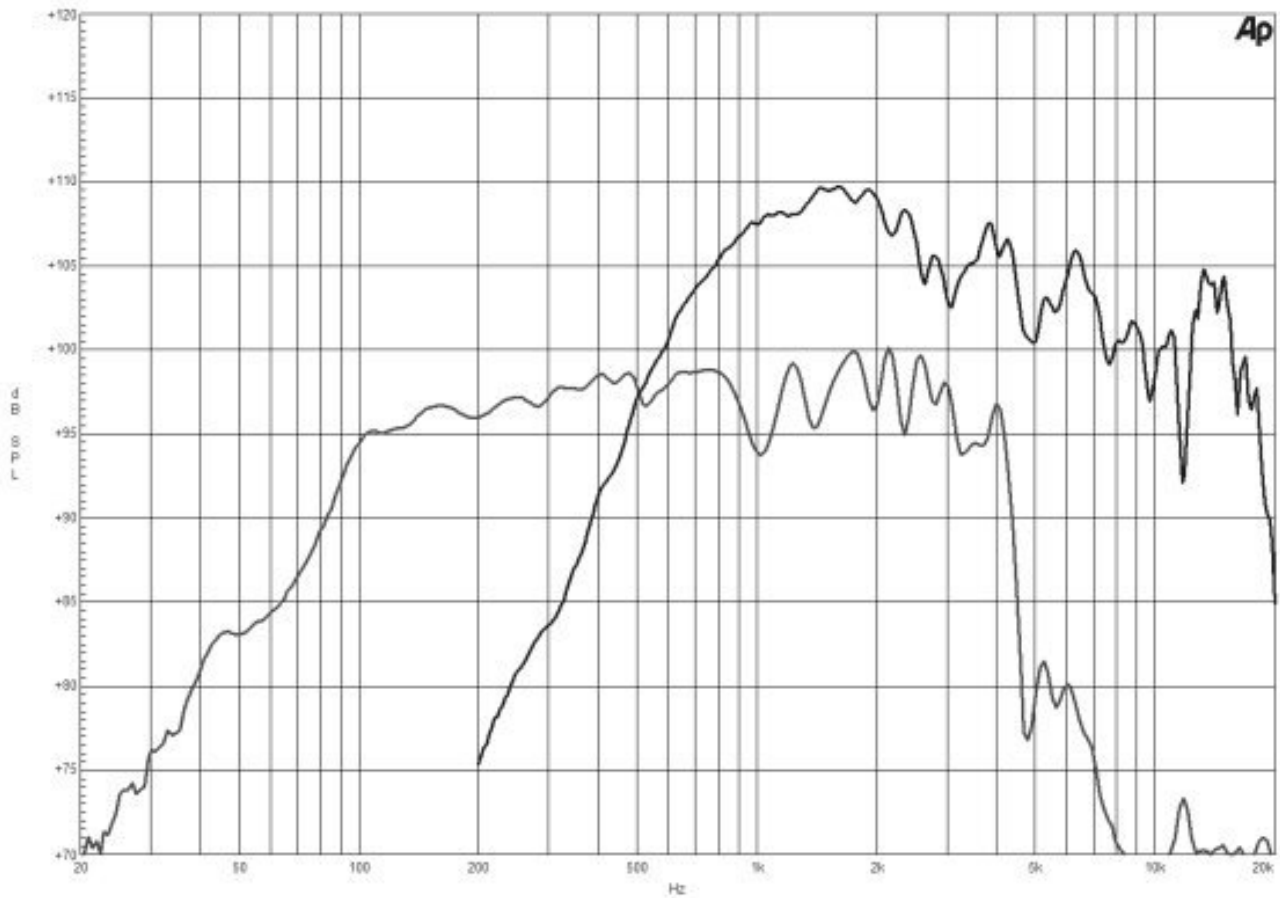
## MOUNTING AND SHIPPING INFO

Overall Diameter	<b>393 mm (15.5 in)</b>
Bolt Circle Diameter	<b>374 mm (14.7 in)</b>
Baffle Cutout Diameter	<b>354 mm (13.94 in)</b>
Depth	<b>198 mm (7.8 in)</b>
Flange and Gasket Thickness	<b>16 mm (0.62 in)</b>
Net Weight	<b>5.4 kg (11.9 lb)</b>
Shipping Units	<b>1 pcs</b>
Shipping Weight	<b>7 kg (15.43 lb)</b>
Shipping Box	<b>500x495x275 mm (19.69x19.49x10.83 in)</b>

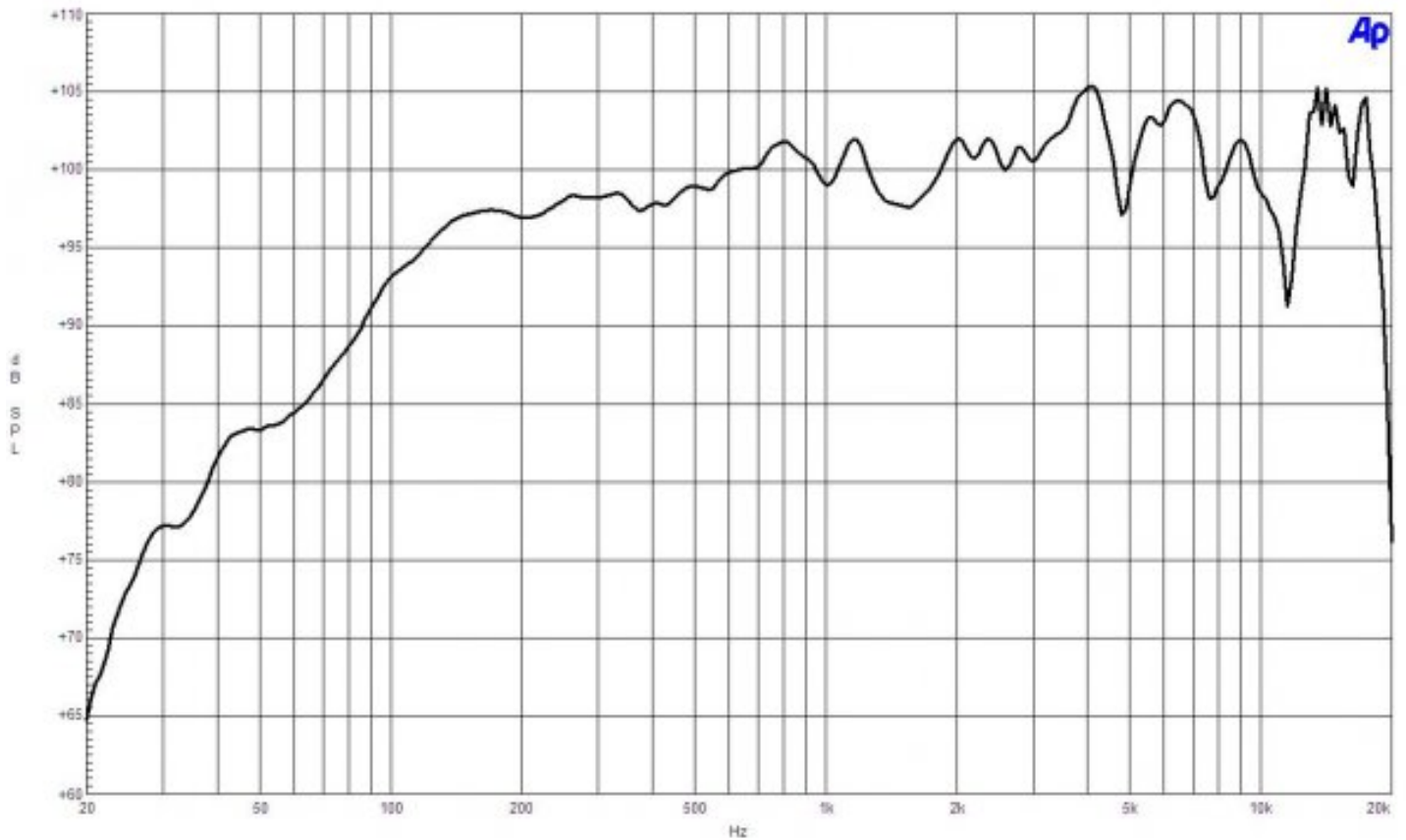
## SERVICE KITS

HF replacement-diaphragm	<b>MMD9028M</b>
LF recone-kits	<b>RCK15CXN768</b>

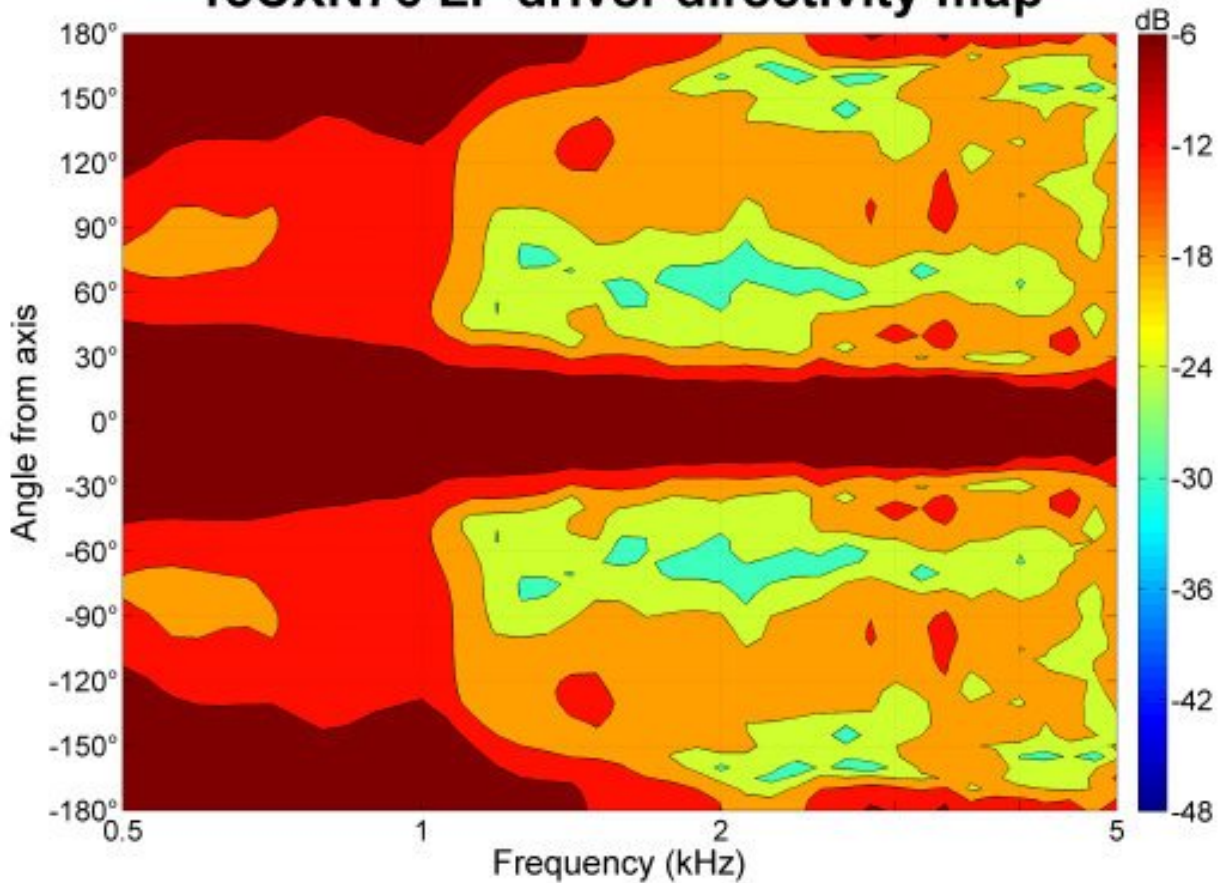
15CXN76 8 Ω



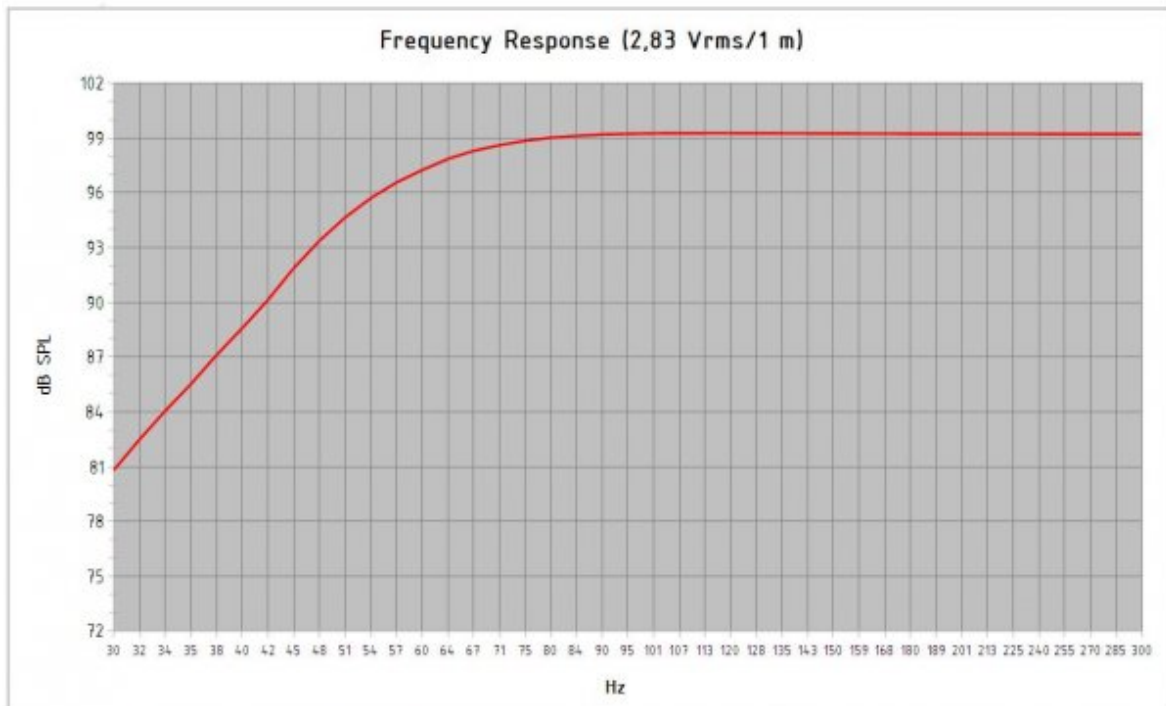
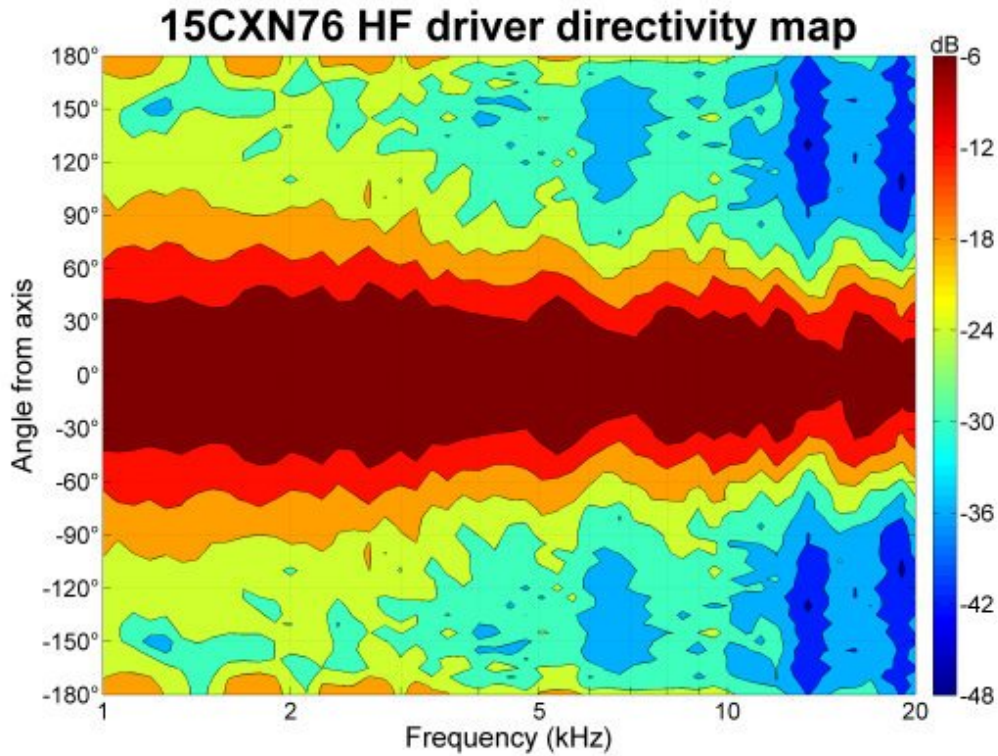
## 15CXN76 8 Ω



### 15CXN76 LF driver directivity map



15CXN76 8 Ω



Model:	<b>15 CXN 76</b>		
Enclosure Type:	<b>Bass Reflex</b>		
Internal Net Volume (Liters):	<b>100</b>	Port Area (cm <sup>2</sup> ):	<b>169,8</b>
Tuning Frequency (Hz):	<b>50</b>	Port Length (cm):	<b>7,5</b>
Frequency (-3 dB) (Hz):	<b>55,7</b>		
Excursion Limited Maximum SPL at 1 meter (dB):	<b>121,3</b>	equal to	<b>214,5</b> Watts (Bass Band Power Rating)
Thermal Limited Maximum SPL at 1 meter (dB):	<b>124,0</b>	equal to	<b>400,0</b> Watts (Mid Band Power Rating)



Professional loudspeaker transducers since 1946

B&C Speakers S.p.A. Via Poggiomoro, 1 - Loc. Vallina, 50012 Bagno a Ripoli (FI) | ITALY  
Tel. +39 055 65721 | Fax +39 055 6572312 | mail@bcspeakers.com

## 15CXN76 8 Ω

