

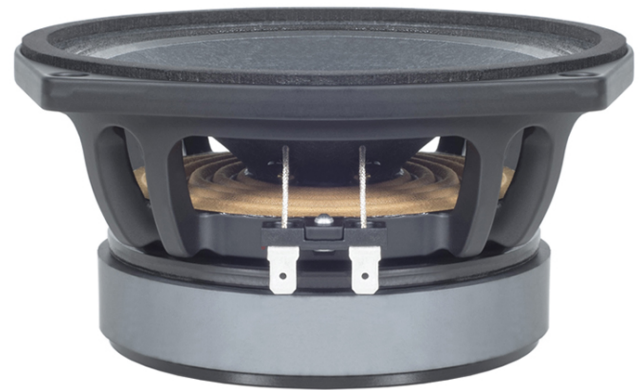
LF Drivers

Ø 6.5 inches

6MD38 8 Ω

Midrange

- 240 W continuous program power capacity
- 38 mm (1.5 in) aluminium voice coil
- 130 - 6000 Hz response
- 96 dB sensitivity



SPECIFICATIONS

Nominal Diameter	170 mm (6.5 in)
Nominal Impedance	8 Ω
Minimum Impedance	6.5 Ω
Nominal Power Handling	120 W
2 hours test made with continuous pink noise signal within the range Fs-10Fs. Power calculated on rated minimum impedance. Loudspeaker in free air.	
Continuous Power Handling	240 W
Power on Continuous Program is defined as 3 dB greater than the Nominal rating.	
Sensitivity	96 dB
Applied RMS Voltage is set to 2.83 V for 8 ohms Nominal Impedance.	
Frequency Range	130 Hz - 6000 Hz
Voice Coil Diameter	38 mm (1.5 in)
Winding Material	Aluminium
Former Material	Glass Fibre
Winding Depth	9 mm (0.35 in)
Magnetic Gap Depth	6 mm (0.25 in)
Flux Density	1.4 T
Woofer Cone Treatment	None

PARAMETERS

Thiele-Small parameters are measured after a high level 20 Hz sine wave preconditioning test.

Fs	130 Hz
Re	5.7 Ω
Qes	0.49
Qms	3.7
Qts	0.44
Vas	3 dm³ (0.1 ft³)
Sd	132 cm² (20.5 in²)
η0	1.4 %
Xmax	2 mm
Xvar	4.5 mm
Mms	12 g
Bl	10.5 Tm
Le	0.25 mH
EBP	265 Hz

DESIGN

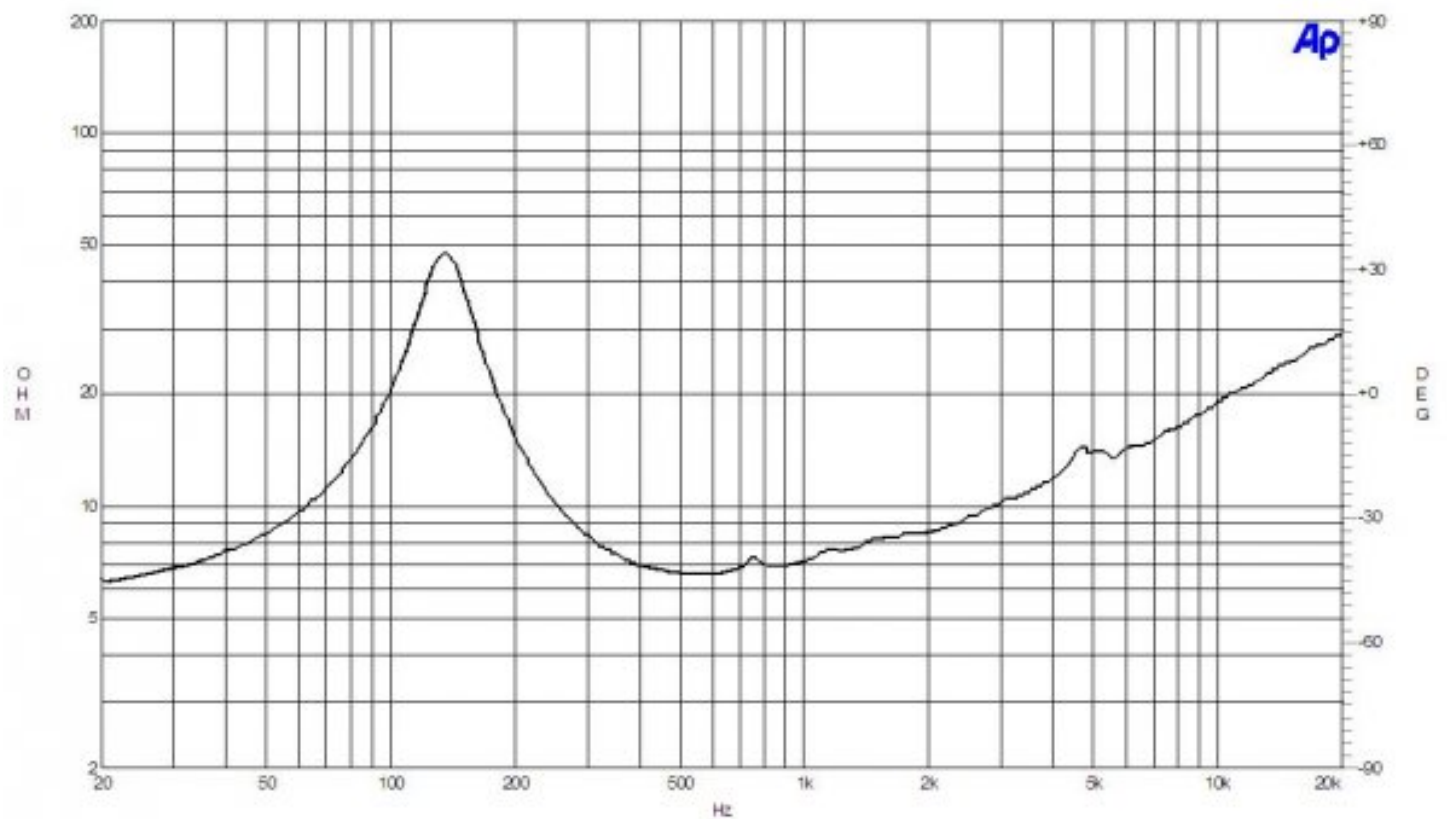
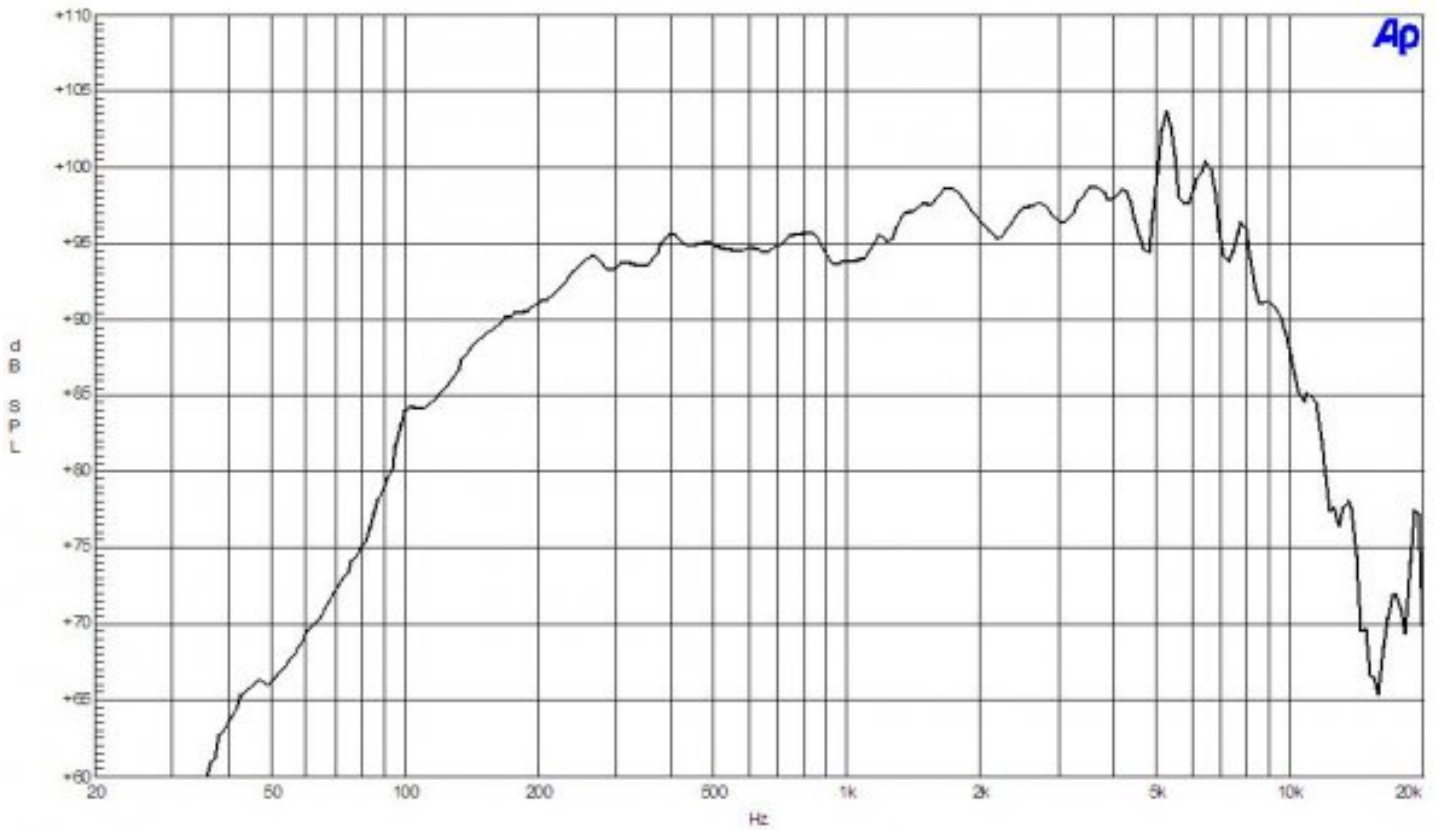
Surround Shape	Triple Roll
Cone Shape	Exponential
Magnet Material	Ferrite
Spider	Single
Pole Design	T-Pole
Woofer Cone Treatment	None

MOUNTING AND SHIPPING INFO

Overall Diameter	187 mm (7.4 in)
Bolt Circle Diameter	172 mm (6.7 in)
Baffle Cutout Diameter	145 mm (5.7 in)
Depth	82 mm (3.2 in)
Flange and Gasket Thickness	9 mm (0.35 in)
Air Volume Occupied by Driver	0.8 dm³ (0.03 ft³)
Net Weight	2.3 kg (5.07 lb)
Shipping Units	1 pcs
Shipping Weight	2.5 kg (5.51 lb)
Shipping Box	210x210x125 mm (8.27x8.27x4.92 in)

SERVICE KITS

LF recone-kits	RCK06MD388
----------------	-------------------



LF Drivers

Ø 6.5 inches

6MD38 8 Ω

Midrange

