

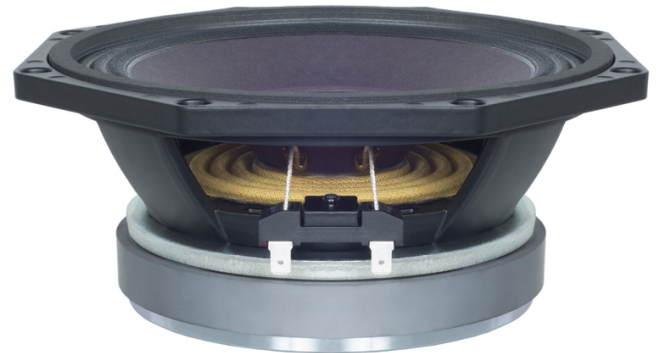
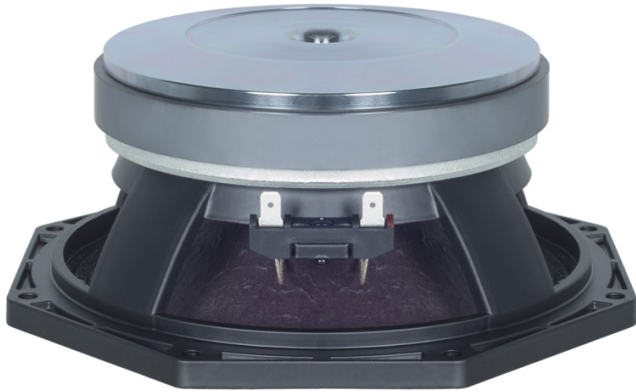
## LF Drivers

Ø 8 inches

**8PE21** 8 Ω

Midrange

- 400 W continuous program power capacity
- 51 mm (2 in) copper voice coil
- 90 - 5000 Hz response
- 98 dB sensitivity



### SPECIFICATIONS

Nominal Diameter	<b>200 mm (8 in)</b>
Nominal Impedance	<b>8 Ω</b>
Minimum Impedance	<b>7.2 Ω</b>
Nominal Power Handling	<b>200 W</b>
2 hours test made with continuous pink noise signal within the range Fs-10Fs. Power calculated on rated minimum impedance. Loudspeaker in free air.	
Continuous Power Handling	<b>400 W</b>
Power on Continuous Program is defined as 3 dB greater than the Nominal rating.	
Sensitivity	<b>98 dB</b>
Applied RMS Voltage is set to 2.83 V for 8 ohms Nominal Impedance.	
Frequency Range	<b>90 Hz - 5000 Hz</b>
Voice Coil Diameter	<b>51 mm (2 in)</b>
Winding Material	<b>Copper</b>
Former Material	<b>Kapton</b>
Winding Depth	<b>9 mm (0.37 in)</b>
Magnetic Gap Depth	<b>8 mm (0.31 in)</b>
Flux Density	<b>1.25 T</b>
Woofer Cone Treatment	<b>None</b>

### PARAMETERS

Thiele-Small parameters are measured after a high level 20 Hz sine wave preconditioning test.

Fs	<b>87 Hz</b>
Re	<b>5.6 Ω</b>
Qes	<b>0.2</b>
Qms	<b>3.8</b>
Qts	<b>0.19</b>
Vas	<b>13 dm<sup>3</sup> (0.46 ft<sup>3</sup>)</b>
Sd	<b>220 cm<sup>2</sup> (34.1 in<sup>2</sup>)</b>
η0	<b>4.1 %</b>
Xmax	<b>2.5 mm</b>
Xvar	<b>4.5 mm</b>
Mms	<b>18 g</b>
Bl	<b>16.6 Tm</b>
Le	<b>0.5 mH</b>
EBP	<b>435 Hz</b>

### DESIGN

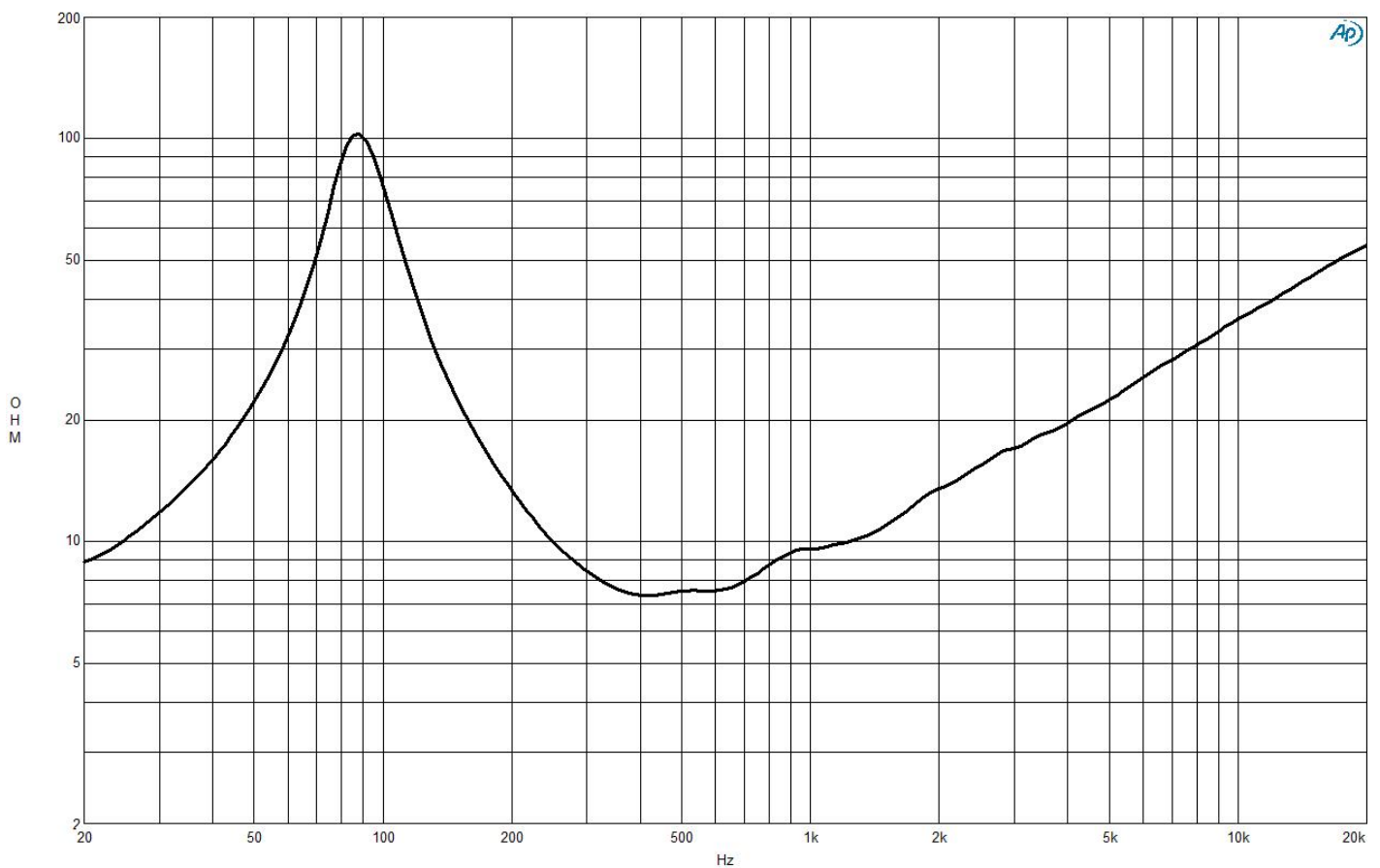
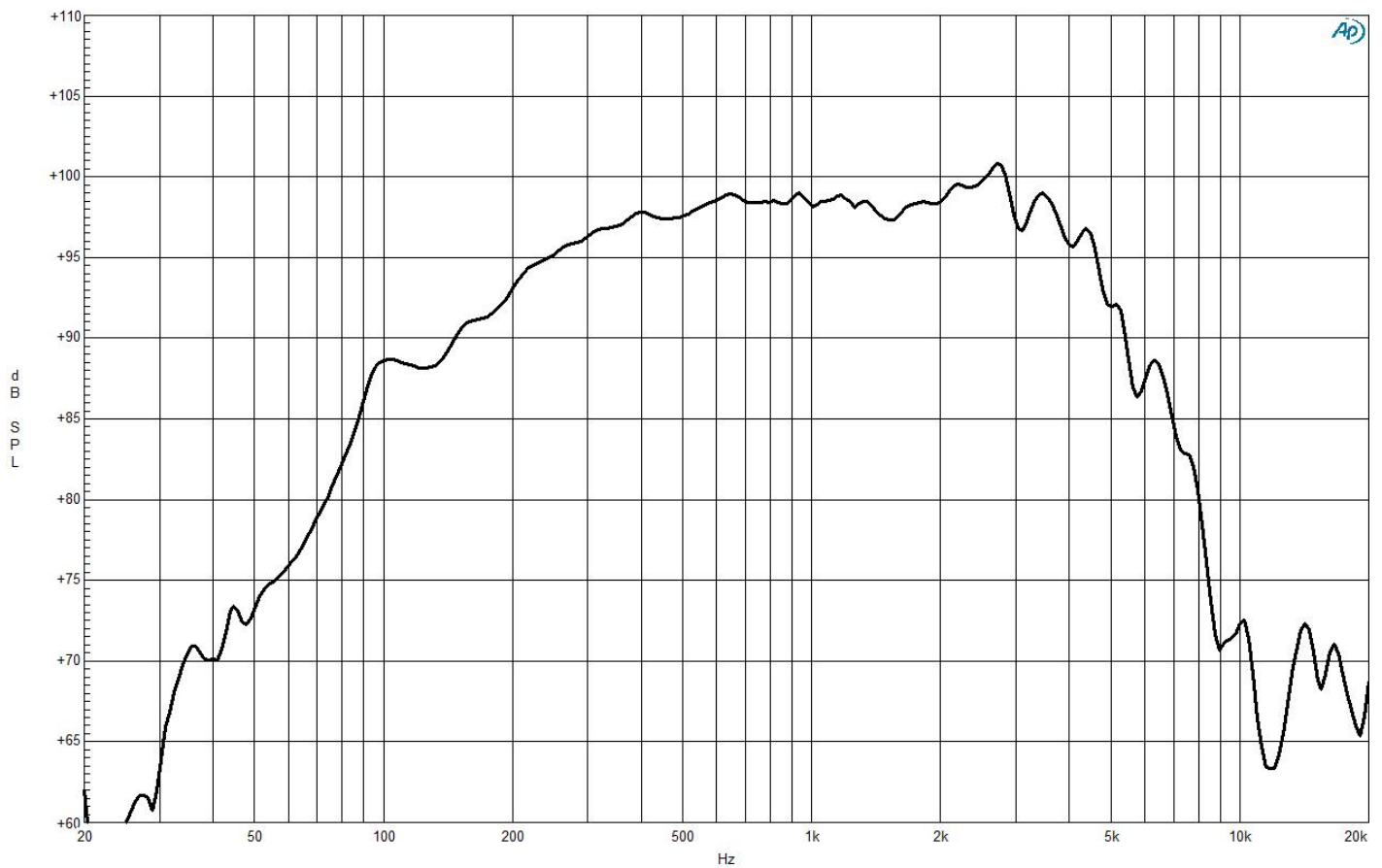
Surround Shape	<b>Triple Roll</b>
Cone Shape	<b>Radial</b>
Magnet Material	<b>Ferrite</b>
Spider	<b>Single</b>
Pole Design	<b>Straight Pole</b>
Woofer Cone Treatment	<b>None</b>

### MOUNTING AND SHIPPING INFO

Overall Diameter	<b>225 mm (8.86 in)</b>
Bolt Circle Diameter	<b>210 mm (8.27 in)</b>
Baffle Cutout Diameter	<b>187 mm (7.36 in)</b>
Depth	<b>91 mm (3.58 in)</b>
Flange and Gasket Thickness	<b>11 mm (0.43 in)</b>
Air Volume Occupied by Driver	<b>1.2 dm<sup>3</sup> (0.04 ft<sup>3</sup>)</b>
Net Weight	<b>4.25 kg (9.37 lb)</b>
Shipping Units	<b>1 pcs</b>
Shipping Weight	<b>4.7 kg (10.36 lb)</b>
Shipping Box	<b>255x255x150 mm (10.04x10.04x5.91 in)</b>

### SERVICE KITS

LF recone-kits	<b>RCK008PE218</b>
----------------	--------------------



# LF Drivers

Ø 8 inches

**8PE21** 8 Ω

Midrange

