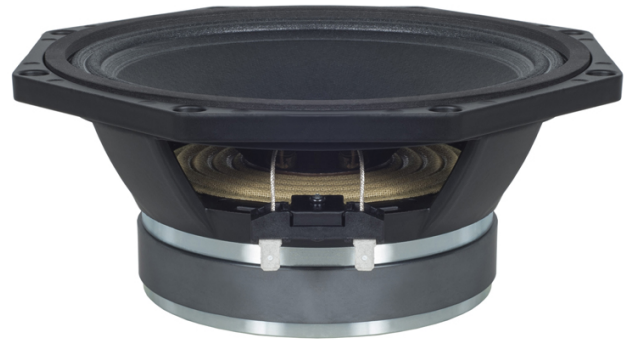


- 400 W continuous program power capacity
- 51 mm (2 in) copper voice coil
- 70 - 3000 Hz response
- 94 dB sensitivity
- Shorting copper cap for extended HF response



SPECIFICATIONS

Nominal Diameter	200 mm (8 in)
Nominal Impedance	8 Ω
Minimum Impedance	7 Ω
Nominal Power Handling	200 W
<small>2 hours test made with continuous pink noise signal within the range Fs-10Fs. Power calculated on rated minimum impedance. Loudspeaker in free air.</small>	
Continuous Power Handling	400 W
<small>Power on Continuous Program is defined as 3 dB greater than the Nominal rating.</small>	
Sensitivity	94 dB
<small>Applied RMS Voltage is set to 2.83 V for 8 ohms Nominal Impedance.</small>	
Frequency Range	70 Hz - 3000 Hz
Voice Coil Diameter	51 mm (2 in)
Winding Material	Copper
Former Material	Kapton
Winding Depth	16 mm (0.62 in)
Magnetic Gap Depth	8 mm (0.31 in)
Flux Density	1.1 T
Woofer Cone Treatment	None

PARAMETERS

Thiele-Small parameters are measured after a high level 20 Hz sine wave preconditioning test.

Fs	73 Hz
Re	5.4 Ω
Qes	0.36
Qms	4.2
Qts	0.33
Vas	14 dm³ (0.49 ft³)
Sd	220 cm² (34.1 in²)
η ₀	1.5 %
X _{max}	5 mm
X _{var}	4 mm
M _{ms}	23 g
Bl	12.6 Tm
Le	0.5 mH
EBP	203 Hz

DESIGN

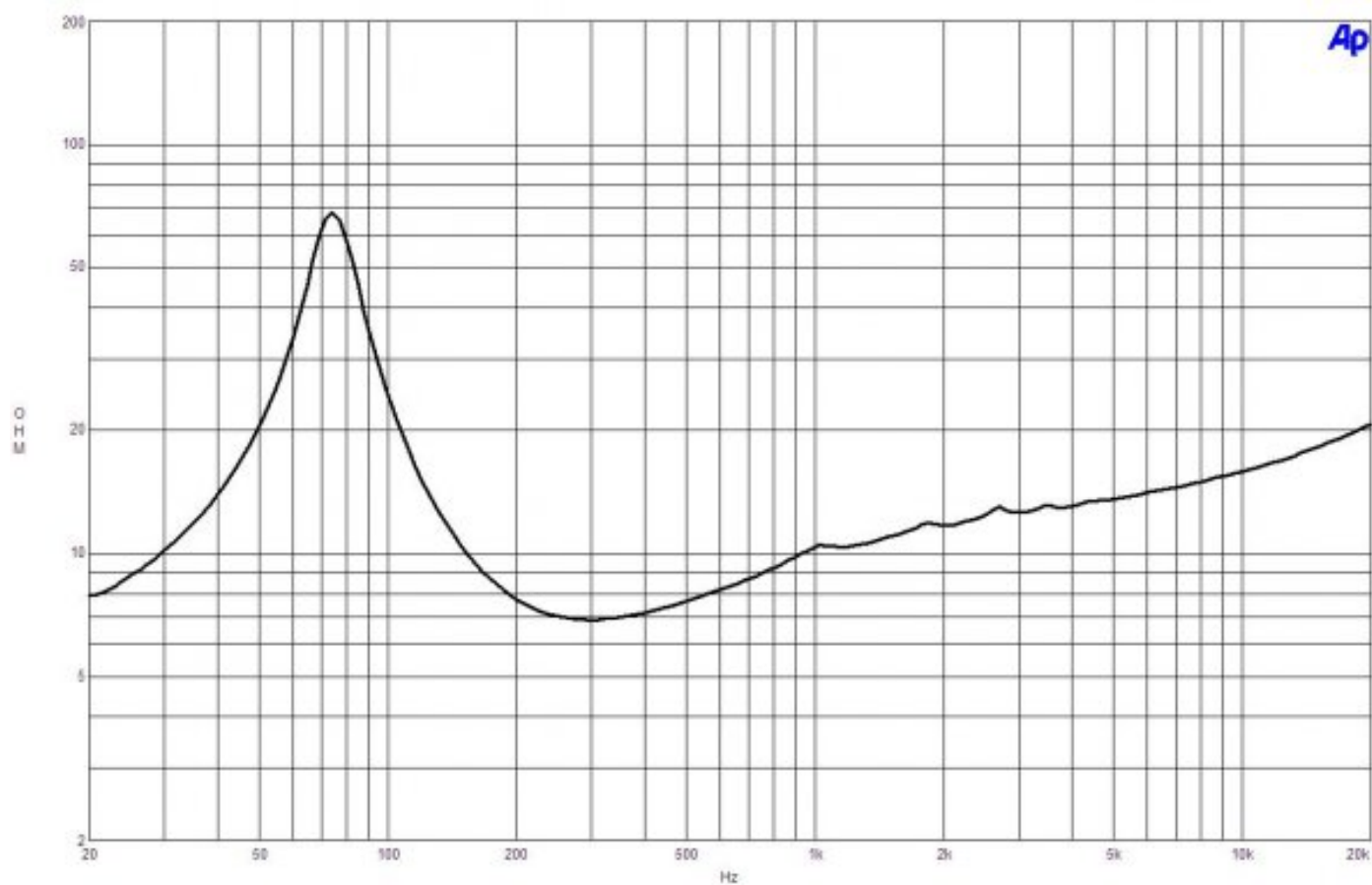
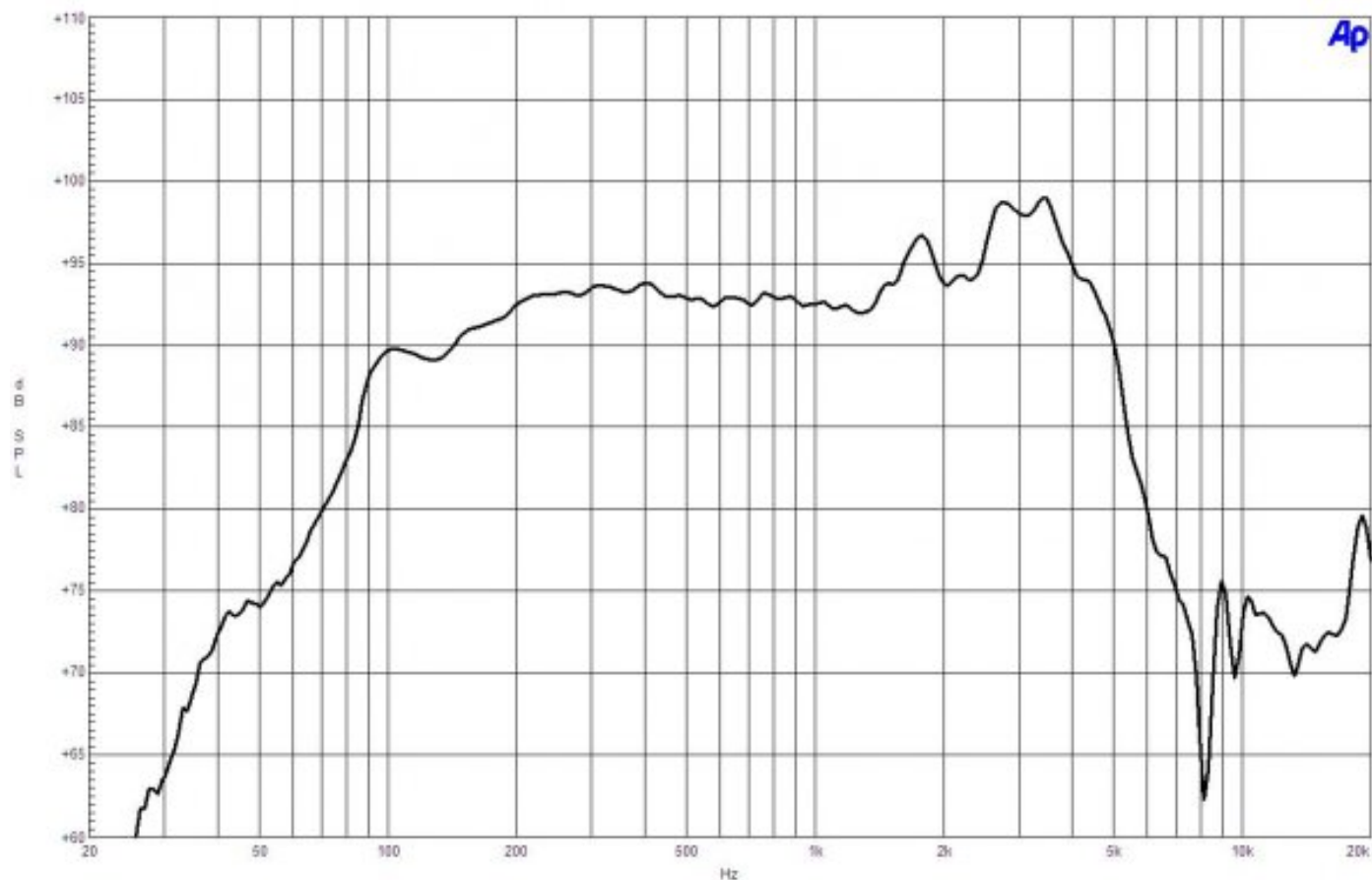
Surround Shape	Double Roll
Cone Shape	Exponential
Magnet Material	Ferrite
Spider	Single
Pole Design	T-Pole
Woofer Cone Treatment	None
Recommended Enclosure	14 dm³ (0.49 ft³)
Recommended Tuning	73 Hz

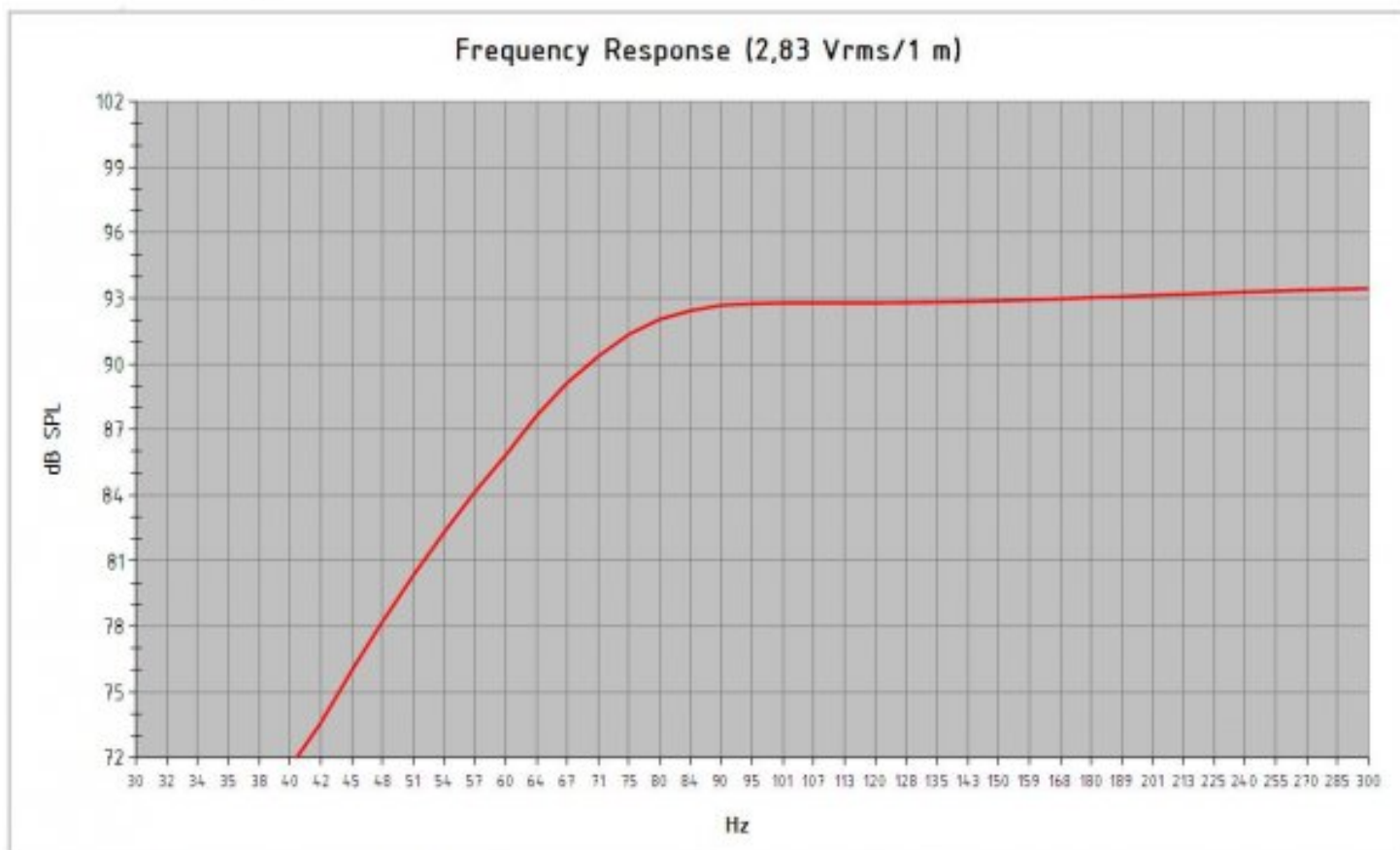
MOUNTING AND SHIPPING INFO

Overall Diameter	225 mm (8.8 in)
Bolt Circle Diameter	210 mm (8.3 in)
Baffle Cutout Diameter	187 mm (7.4 in)
Depth	91 mm (3.6 in)
Flange and Gasket Thickness	11 mm (0.4 in)
Air Volume Occupied by Driver	1.2 dm³ (0.04 ft³)
Net Weight	3.3 kg (7.28 lb)
Shipping Units	1 pcs
Shipping Weight	3.75 kg (8.27 lb)
Shipping Box	255x255x150 mm (10.04x10.04x5.91 in)

SERVICE KITS

LF recone-kits	RCK008PS218
----------------	--------------------





Model: **8 PS 21**
 Enclosure Type: **Bass Reflex**

Internal Net Volume (Liters):	14	Port Area (cm ²):	32,2
Tuning Frequency (Hz):	73	Port Length (cm):	7,4
Frequency (-3 dB) (Hz):	72,8		

Excursion Limited Maximum SPL at 1 meter (dB):	110,6	equal to	54,4 Watts	(Bass Band Power Rating)
Thermal Limited Maximum SPL at 1 meter (dB):	116,3	equal to	200,0 Watts	(Mid Band Power Rating)

