

ME142

SPECIFICATIONS

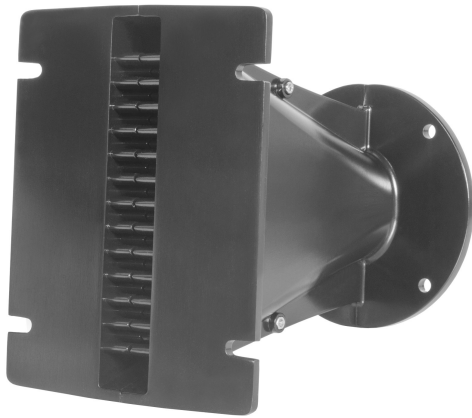
Horn mounted on B&C DE 750 compression driver.

Throat Diameter	36 mm (1.4 in)
Nominal Coverage Horizontal	120°
Cutoff Frequency	0.8 kHz
Material	Cast Aluminium
Design	Line Array Optimized Waveguide
Dimensions	163x130x180 mm (6.42x5.12x7.09 in)

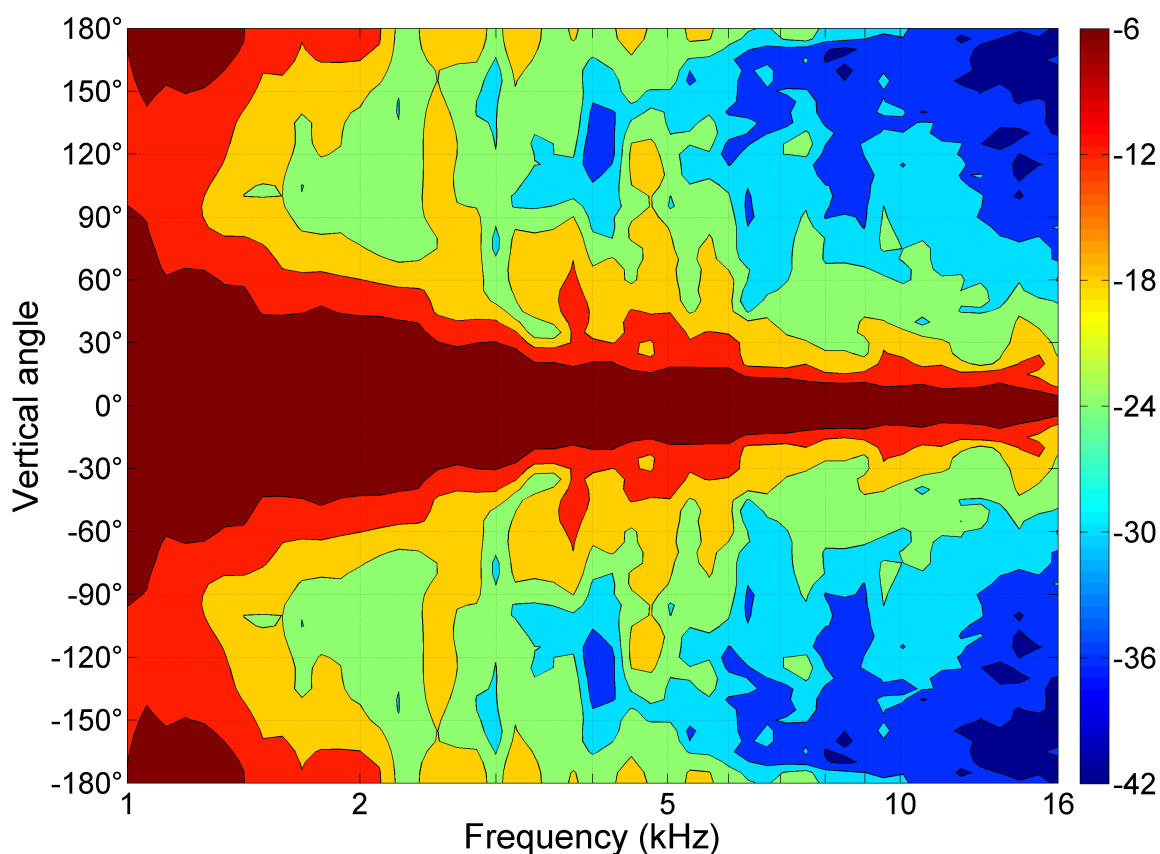
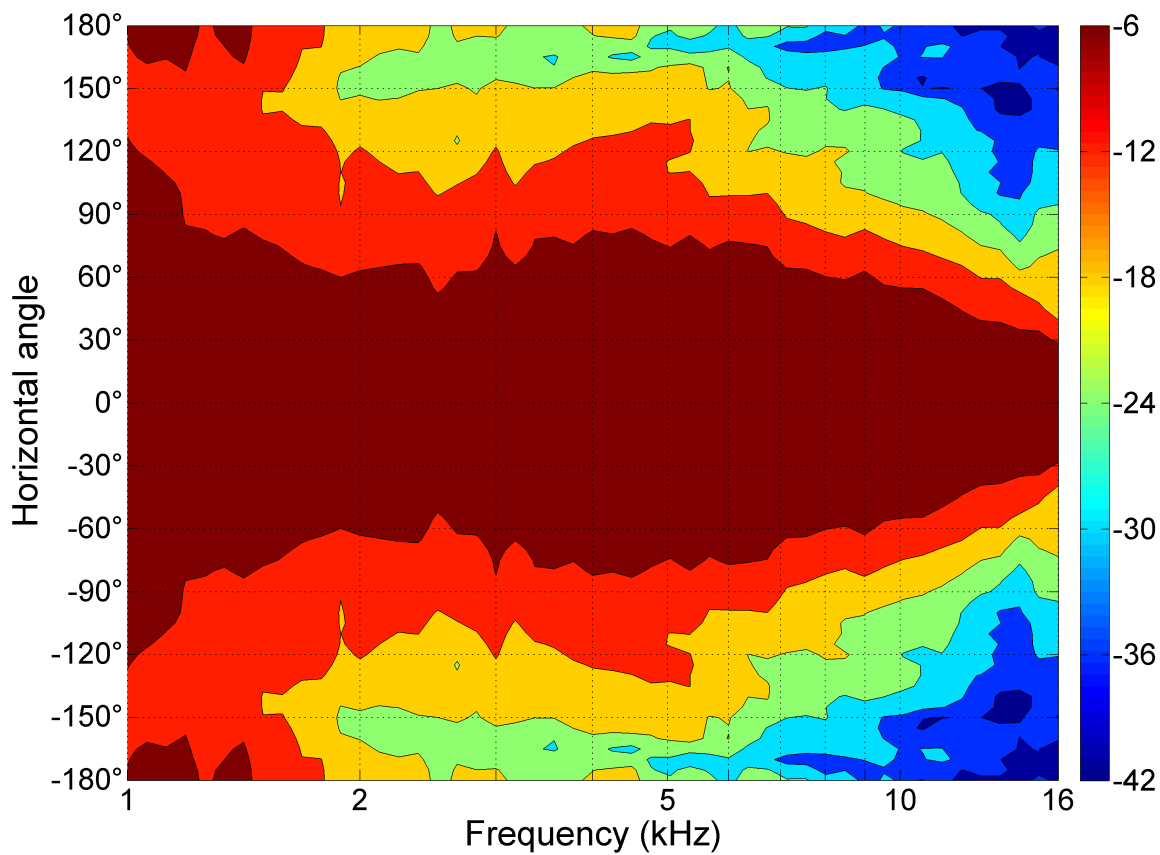
MOUNTING AND SHIPPING INFO

Other details	Four 6.5 mm holes at 90° on 102 mm (4 in) diameter
Baffle Cutout Dimension	153 mm (6 in)
Air Volume Occupied by Driver	0.34 dm³ (0.01 ft³)
Net Weight	1.05 kg (2.31 lb)
Shipping Units	1 pcs
Shipping Weight	1.15 kg (2.53 lb)
Shipping Box	190x135x165 mm (7.48x5.31x6.50 in)

- 1.4" throat entry
- Line Array optimized Waveguide
- 120° max horizontal coverage
- Vertical coverage depends on configuration
- Very good loading down to 800 Hz



ME142



ME142

