

### ME146+354+HF146 8 Ω

- Line Array optimized Waveguide + Flare with [DCX354](#) driver, [ME146](#) horn and [HF146](#) flare
- 110.3 dB sensitivity
- 180 W continuous program power capacity
- 100° max horizontal coverage
- Vertical coverage depends on configuration
- Very good loading and directivity control down to 700 Hz
- Neodymium magnet assembly
- Recommended hardware for horn mounting: four M6x12 screws



## ME146+354+HF146 8 Ω

### SPECIFICATIONS HORN UNIT

Waveguide mounted on 90°x10° bell horn

Nominal Impedance	<b>8 Ω</b>
Active Radiating Factor	<b>92 %</b>
Horizontal Coverage	<b>100 ° Max</b>

### SPECIFICATIONS HF UNIT

Minimum Impedance	<b>6.8 Ω</b>
-------------------	--------------

Nominal Power Handling	<b>50 W</b>
------------------------	-------------

2 hour test made with continuous pink noise signal (6 dB crest factor) within the range from the recommended crossover frequency to 20 kHz. Power calculated on rated minimum impedance.

Continuous Power Handling	<b>100 W</b>
---------------------------	--------------

Power on Continuous Program is defined as 3 dB greater than the Nominal rating.

Sensitivity	<b>110.3 dB</b>
-------------	-----------------

Applied RMS Voltage is set to 2.83 V for 8 ohms impedance

Frequency Range	<b>4 kHz - 20 kHz</b>
-----------------	-----------------------

Recommended Crossover	<b>4.5 kHz</b>
-----------------------	----------------

12 dB/oct. Or higher slope high-pass filter.

Voice Coil Diameter	<b>51 mm (2 in)</b>
---------------------	---------------------

Winding Material	<b>Aluminium</b>
------------------	------------------

Inductance	<b>0.1 mH</b>
------------	---------------

Flux Density	<b>1.96 T</b>
--------------	---------------

Diaphragm Material	<b>HT Polymer Ring</b>
--------------------	------------------------

### SPECIFICATIONS MF UNIT

Minimum Impedance	<b>8.2 Ω</b>
-------------------	--------------

Nominal Power Handling	<b>90 W</b>
------------------------	-------------

2 hour test made with continuous pink noise signal within the range from the recommended crossover frequency to 20 kHz. Power calculated on rated minimum impedance.

Continuous Power Handling	<b>180 W</b>
---------------------------	--------------

Power on Continuous Program is defined as 3 dB greater than the Nominal rating.

Sensitivity	<b>109.2 dB</b>
-------------	-----------------

Applied RMS Voltage is set to 2.83 V with FB4648 crossover filter

Frequency Range	<b>0.4 kHz - 6 kHz</b>
-----------------	------------------------

Recommended Crossover	<b>0.7 kHz</b>
-----------------------	----------------

12 dB/oct. Or higher slope high-pass filter.

Voice Coil Diameter	<b>76 mm (3 in)</b>
---------------------	---------------------

Winding Material	<b>Aluminium</b>
------------------	------------------

Inductance	<b>0.26 mH</b>
------------	----------------

Flux Density	<b>1.93 T</b>
--------------	---------------

Diaphragm Material	<b>HT Polymer Ring</b>
--------------------	------------------------

### MOUNTING AND SHIPPING INFO

Recommended hardware for horn mounting: four M6x12 screws

Net Weight	<b>3.52 kg (7.76 lb)</b>
------------	--------------------------

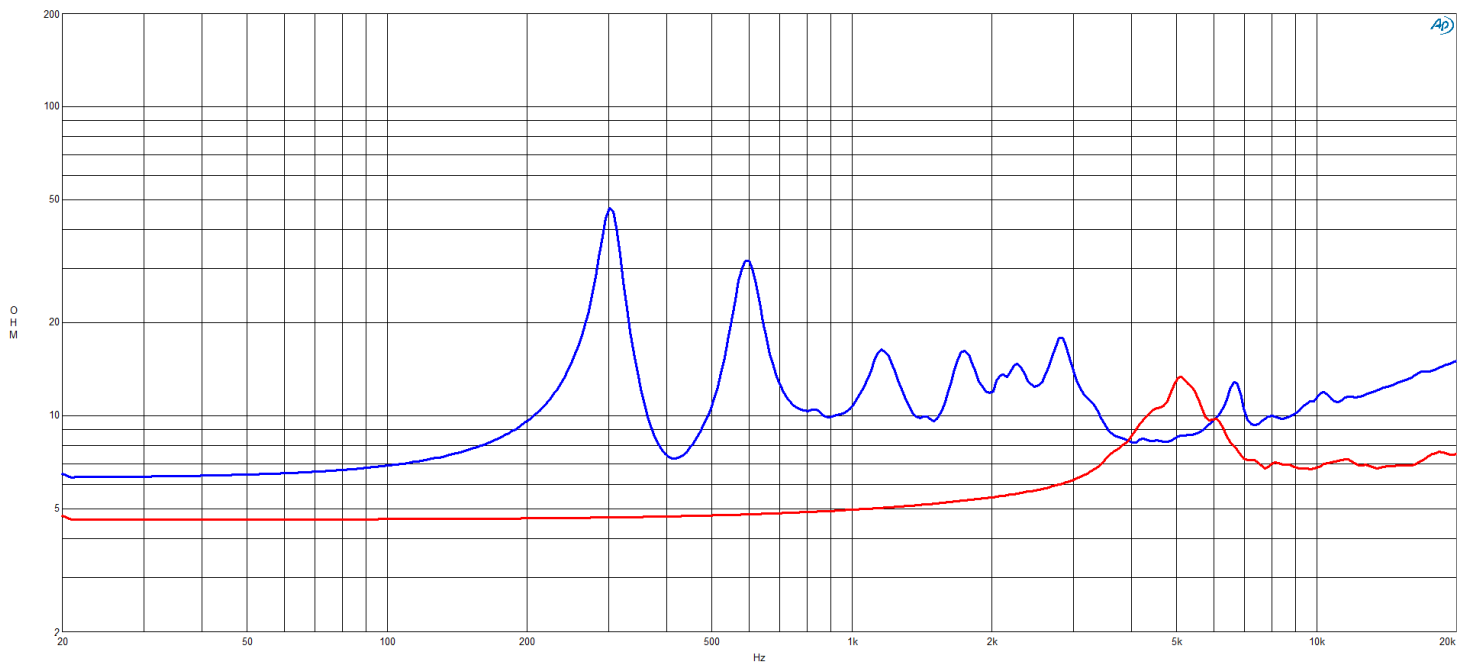
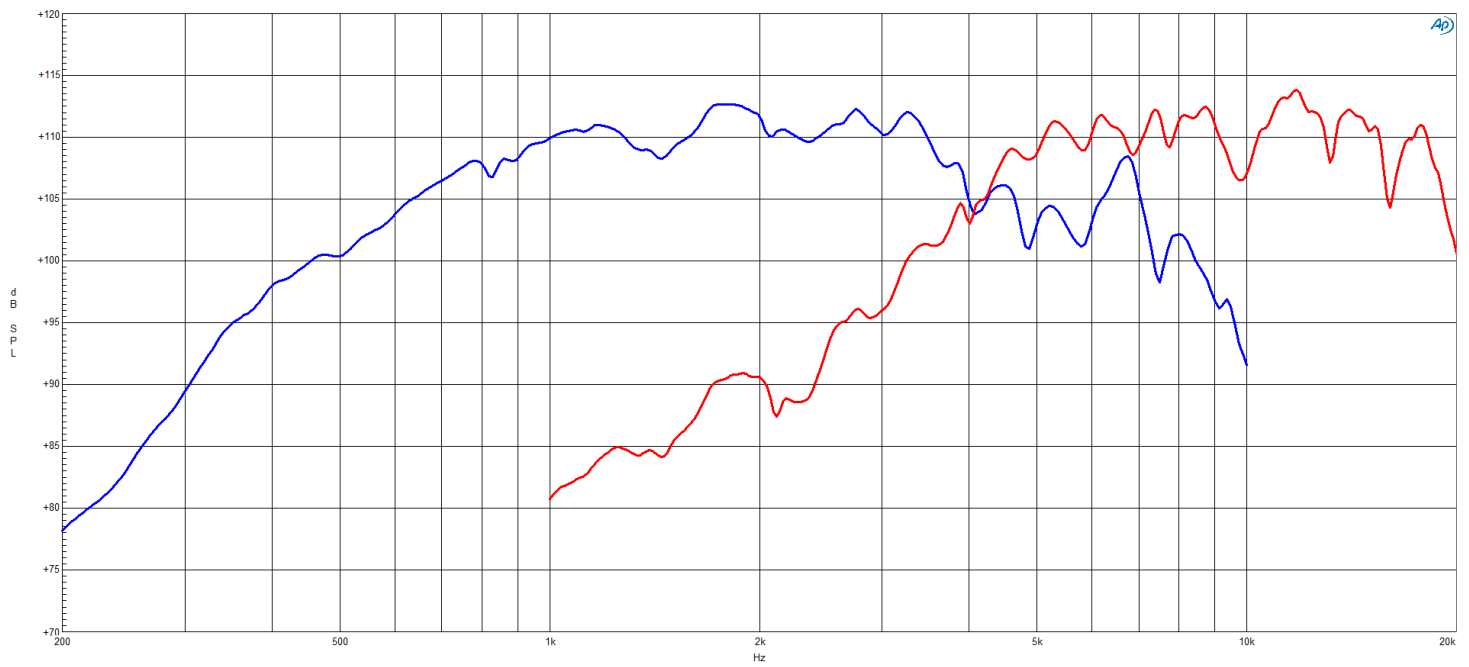
Driver Diameter	<b>130 mm (5.12 in)</b>
-----------------	-------------------------

### SERVICE KITS

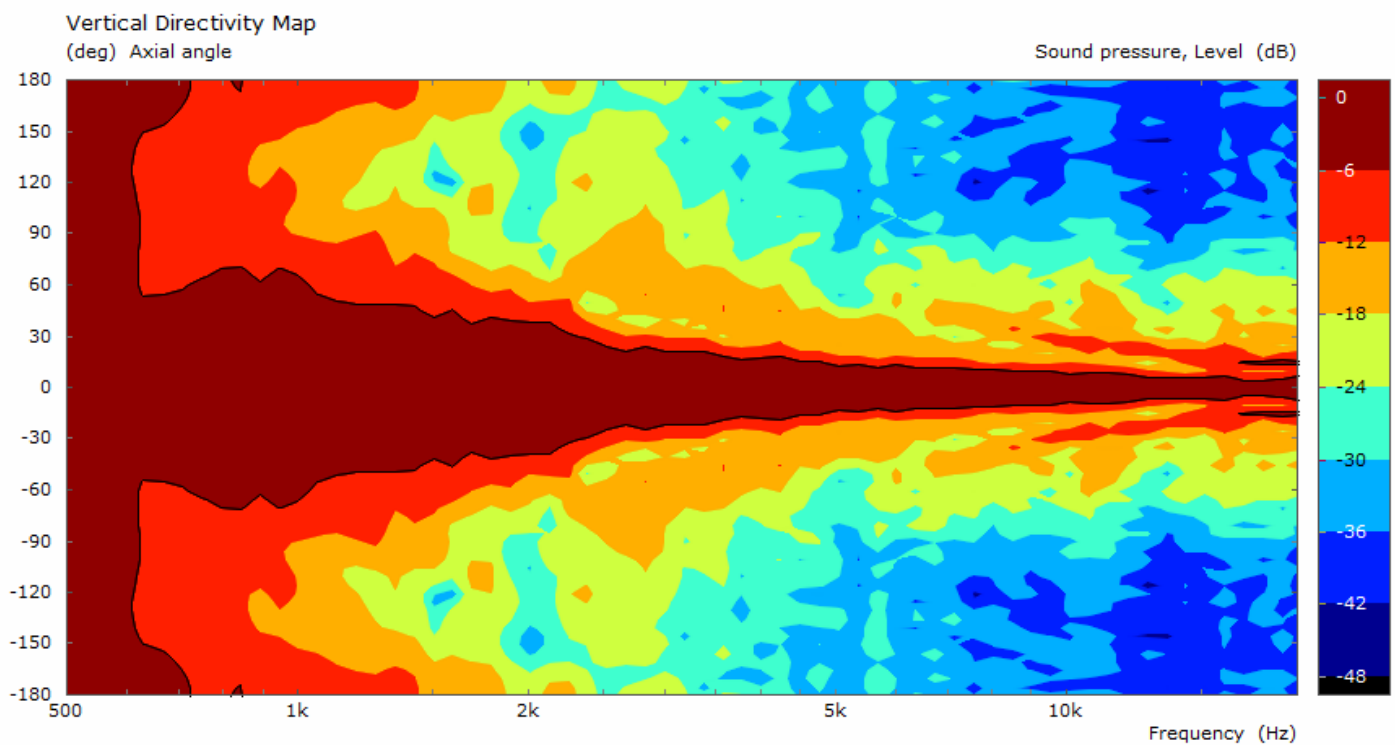
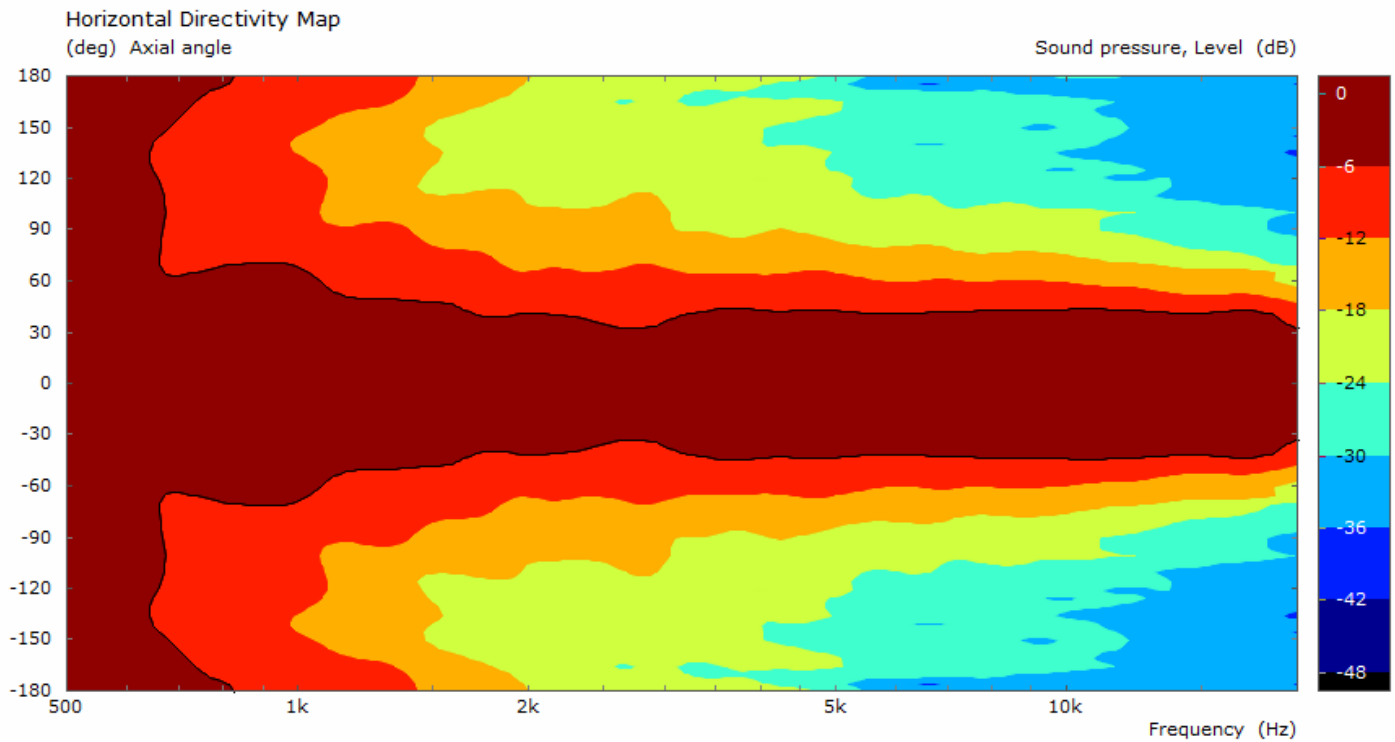
HF replacement-diaphragm	<b>MMDDCX354HF8</b>
--------------------------	---------------------

MF replacement-diaphragm	<b>MMDDCX354MF8</b>
--------------------------	---------------------

## ME146+354+HF146 8 Ω



## ME146+354+HF146 8 Ω



## ME146+354+HF146 8 Ω

