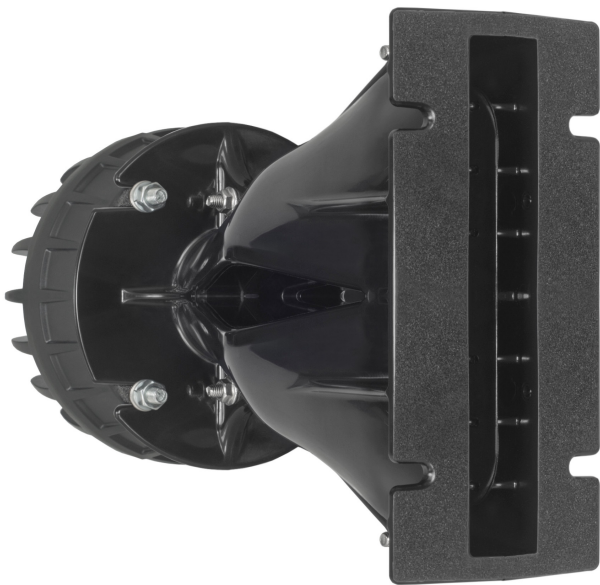


## ME146+354 8 Ω

- Line Array optimized Waveguide with [DCX354](#) HF driver and [ME146](#) horn
- Time coherent coaxial ring radiator design
- 120° max horizontal coverage
- 111 dB sensitivity
- 180 W continuous program power capacity
- Neodymium magnet assembly
- Recommended hardware for horn mounting: four M6x12 screws



## ME146+354 8 Ω

### SPECIFICATIONS HORN UNIT

Waveguide mounted on lab flare

Nominal Impedance	<b>8 Ω</b>
Active Radiating Factor	<b>92 %</b>
Horizontal Coverage	<b>120 ° Max</b>

### SPECIFICATIONS HF UNIT

Minimum Impedance	<b>6.5 Ω</b>
Nominal Power Handling	<b>50 W</b>
2 hour test made with continuous pink noise signal (6 dB crest factor) within the range from the recommended crossover frequency to 20 kHz. Power calculated on rated minimum impedance.	
Continuous Power Handling	<b>100 W</b>
Power on Continuous Program is defined as 3 dB greater than the Nominal rating.	
Sensitivity	<b>111 dB</b>
Applied RMS Voltage is set to 2.83 V for 8 ohms Nominal Impedance.	
Frequency Range	<b>5 kHz - 20 kHz</b>
Recommended Crossover	<b>4.5 kHz</b>
12 dB/oct. Or higher slope high-pass filter.	
Voice Coil Diameter	<b>51 mm (2 in)</b>
Winding Material	<b>Aluminium</b>
Inductance	<b>0.1 mH</b>
Flux Density	<b>1.96 T</b>
Diaphragm Material	<b>HT Polymer Ring</b>

### SPECIFICATIONS MF UNIT

Minimum Impedance	<b>7.7 Ω</b>
Nominal Power Handling	<b>90 W</b>
AES Standard	
Continuous Power Handling	<b>180 W</b>
Power on Continuous Program is defined as 3 dB greater than the Nominal rating.	
Sensitivity	<b>108.5 dB</b>
Applied RMS Voltage is set to 2.83 V for 8 ohms Nominal Impedance.	
Frequency Range	<b>0.4 kHz - 6 kHz</b>
Recommended Crossover	<b>0.4 kHz</b>
12 dB/oct. Or higher slope high-pass filter.	
Voice Coil Diameter	<b>76 mm (3 in)</b>
Winding Material	<b>Aluminium</b>
Inductance	<b>0.26 mH</b>
Flux Density	<b>1.93 T</b>
Diaphragm Material	<b>HT Polymer Ring</b>

### MOUNTING AND SHIPPING INFO

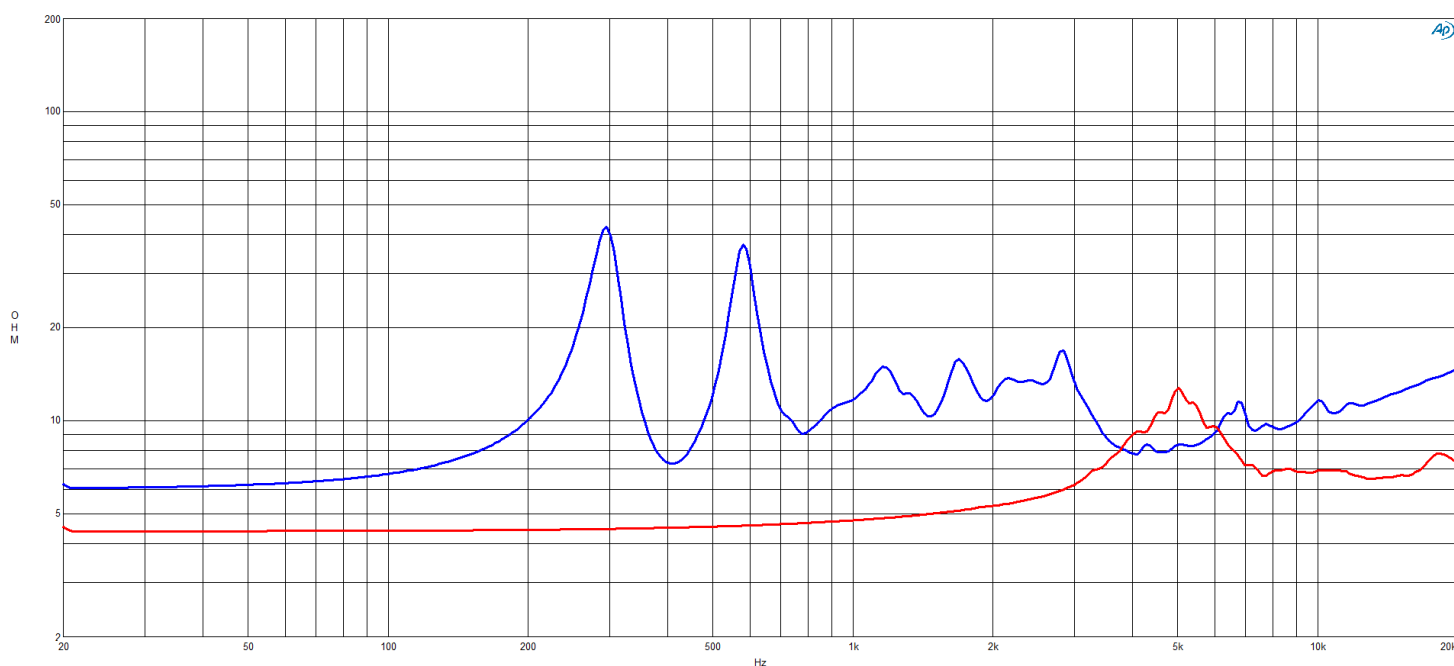
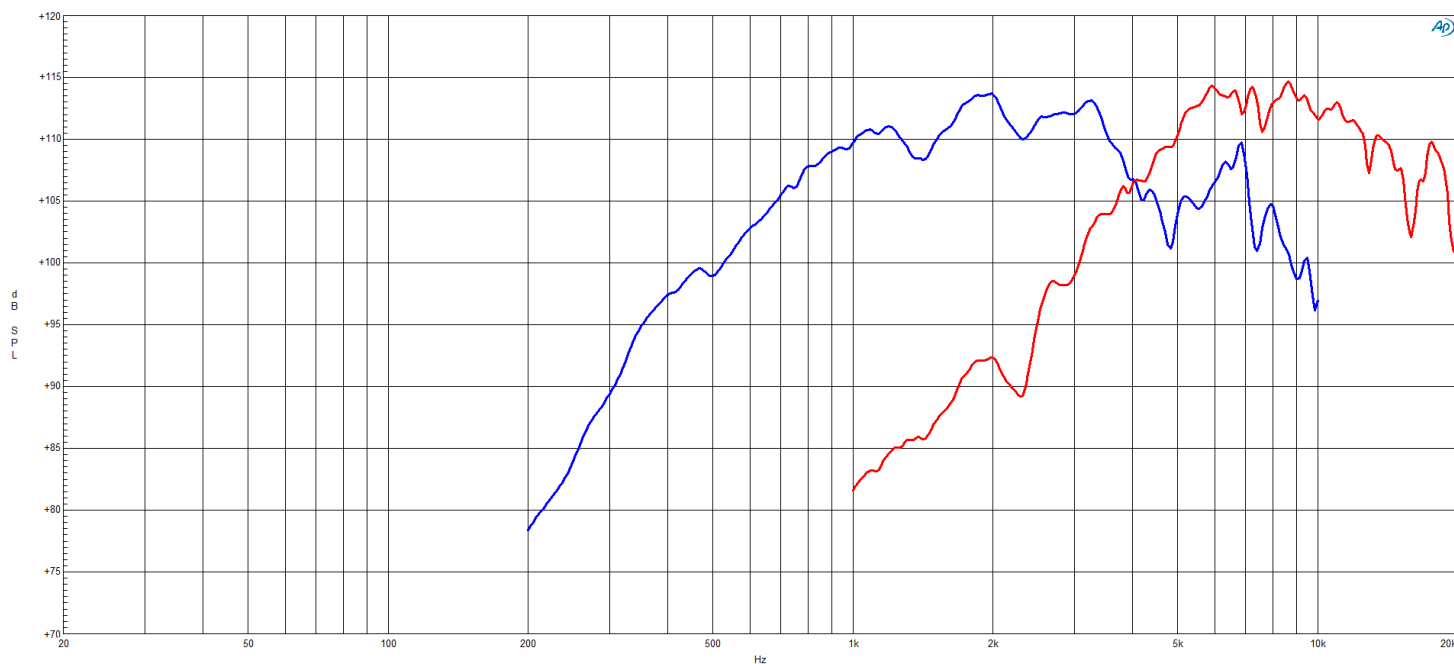
Recommended hardware for horn mounting: four M6x12 screws

Exit Size	<b>165x25.6 mm (6.5x1 in)</b>
Net Weight	<b>3.07 kg (6.77 lb)</b>
Driver Diameter	<b>130 mm (5.12 in)</b>

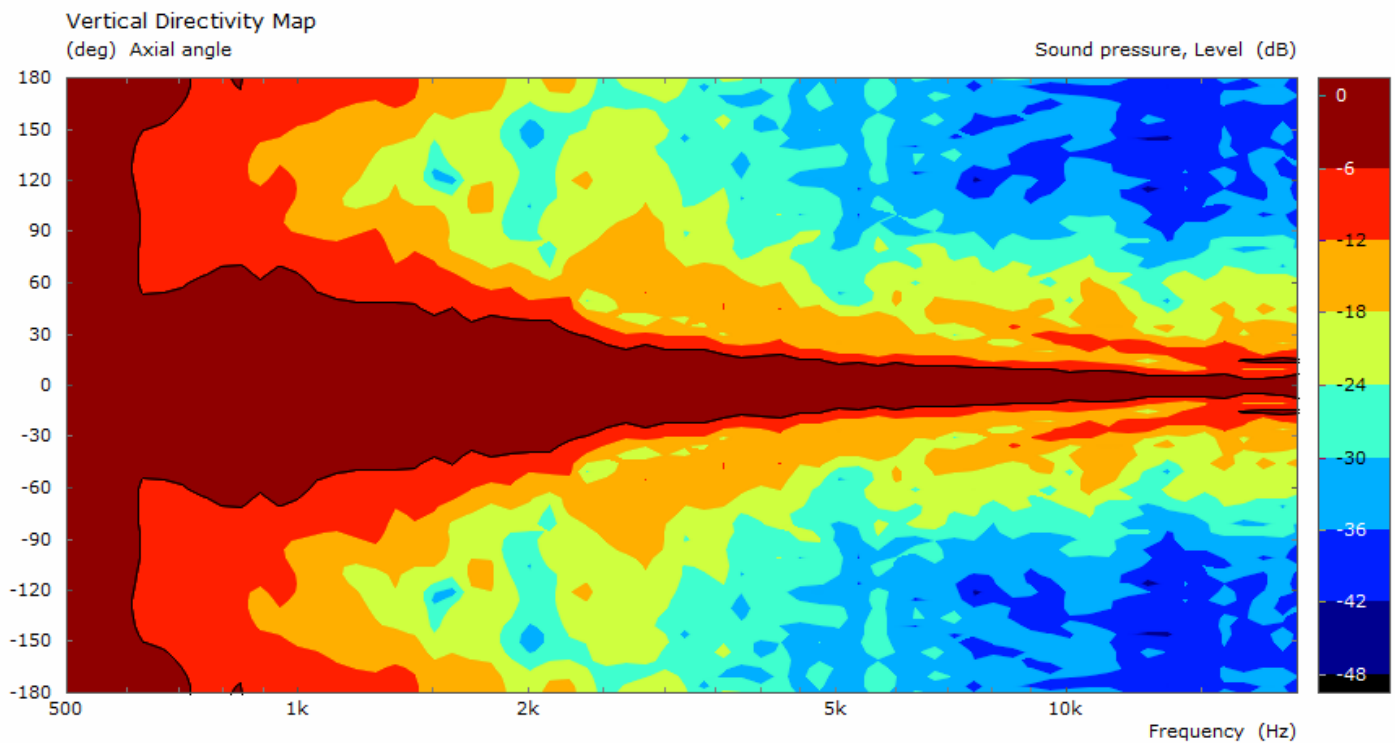
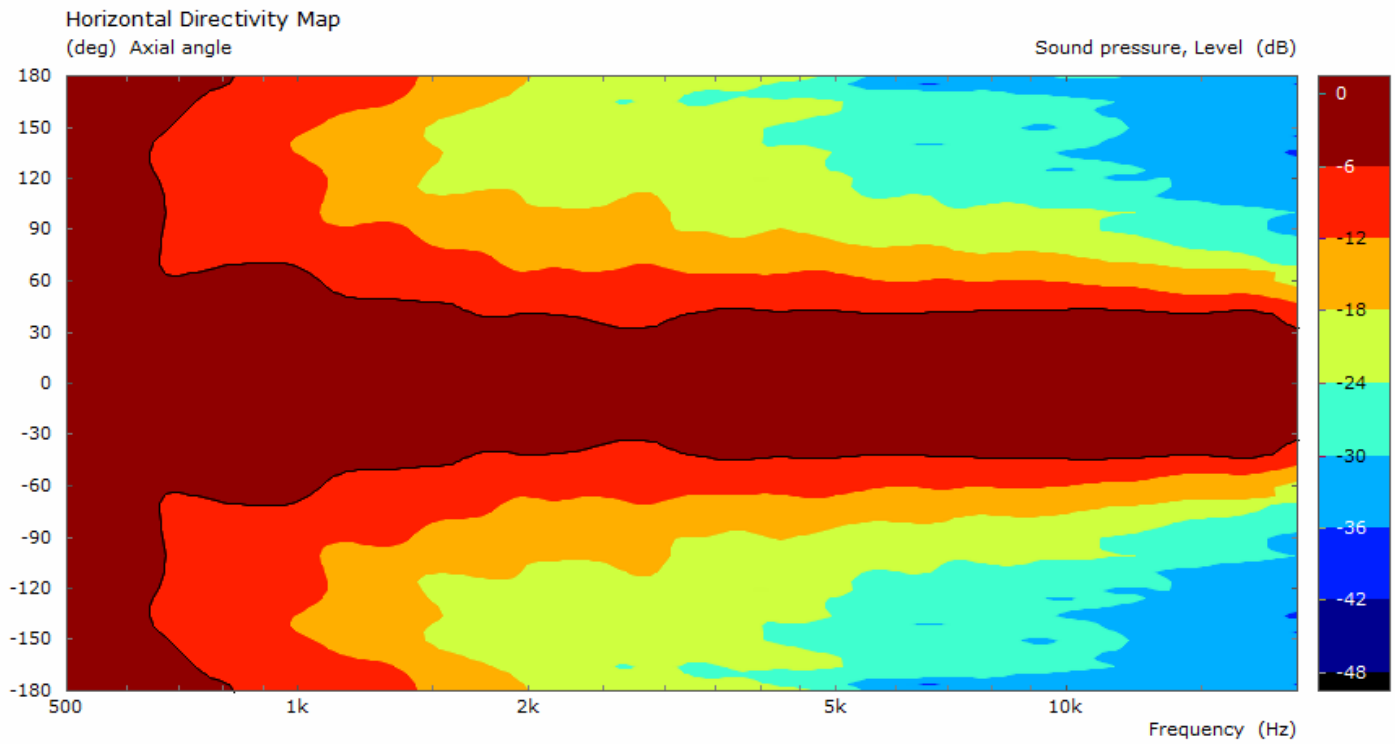
### SERVICE KITS

HF replacement-diaphragm	<b>MMDDCX354HF8</b>
MF replacement-diaphragm	<b>MMDDCX354MF8</b>

## ME146+354 8 Ω



## ME146+354 8 Ω



# Horn/Driver Combinations

Ø 1.4 inches

**ME146+354** 8 Ω

