

## ME242+980TN 8 Ω

- Line Array optimized Waveguide with [DE980TN](#) driver and [ME242](#) horn
- 120° max horizontal coverage
- 220 W continuous program power capacity
- 75 mm (3 in) CCAW voice coil
- Titanium diaphragm
- 500 - 18000 Hz response
- 108.5 dB sensitivity
- Neodymium magnet assembly with shorting copper cap
- Recommended hardware for horn mounting: four M6x14 screws



## ME242+980TN 8 Ω

### SPECIFICATIONS HORN UNIT

Waveguide mounted on 90°x10° bell horn

Nominal Impedance	<b>8 Ω</b>
Active Radiating Factor	<b>93.7 %</b>
Horizontal Coverage	<b>120 ° Max</b>

### SPECIFICATIONS HF UNIT

Minimum Impedance	<b>8 Ω</b>
-------------------	------------

Nominal Power Handling	<b>110 W</b>
------------------------	--------------

2 hour test made with continuous pink noise signal (6 dB crest factor) within the range from the recommended crossover frequency to 20 kHz. Power calculated on rated minimum impedance.

Continuous Power Handling	<b>220 W</b>
---------------------------	--------------

Power on Continuous Program is defined as 3 dB greater than the Nominal rating.

Sensitivity	<b>108.5 dB</b>
-------------	-----------------

Applied RMS Voltage is set to 2.83 V for 8 ohms Nominal Impedance.

Frequency Range	<b>1 kHz - 18 kHz</b>
-----------------	-----------------------

Recommended Crossover	<b>0.8 kHz</b>
-----------------------	----------------

12 dB/oct. Or higher slope high-pass filter.

Voice Coil Diameter	<b>75 mm (3 in)</b>
---------------------	---------------------

Winding Material	<b>CCAW</b>
------------------	-------------

Flux Density	<b>2.05 T</b>
--------------	---------------

Diaphragm Material	<b>Titanium</b>
--------------------	-----------------

### MOUNTING AND SHIPPING INFO

Recommended hardware for horn mounting: four M6x14 screws

Exit Size	<b>153x25 mm (6x1 in)</b>
-----------	---------------------------

Net Weight	<b>3.35 kg (7.39 lb)</b>
------------	--------------------------

Shipping Units	<b>1 pcs</b>
----------------	--------------

Shipping Weight	<b>3.45 kg (7.61 lb)</b>
-----------------	--------------------------

Shipping Box	<b>245x140x175 mm (9.65x5.51x6.89 in)</b>
--------------	---

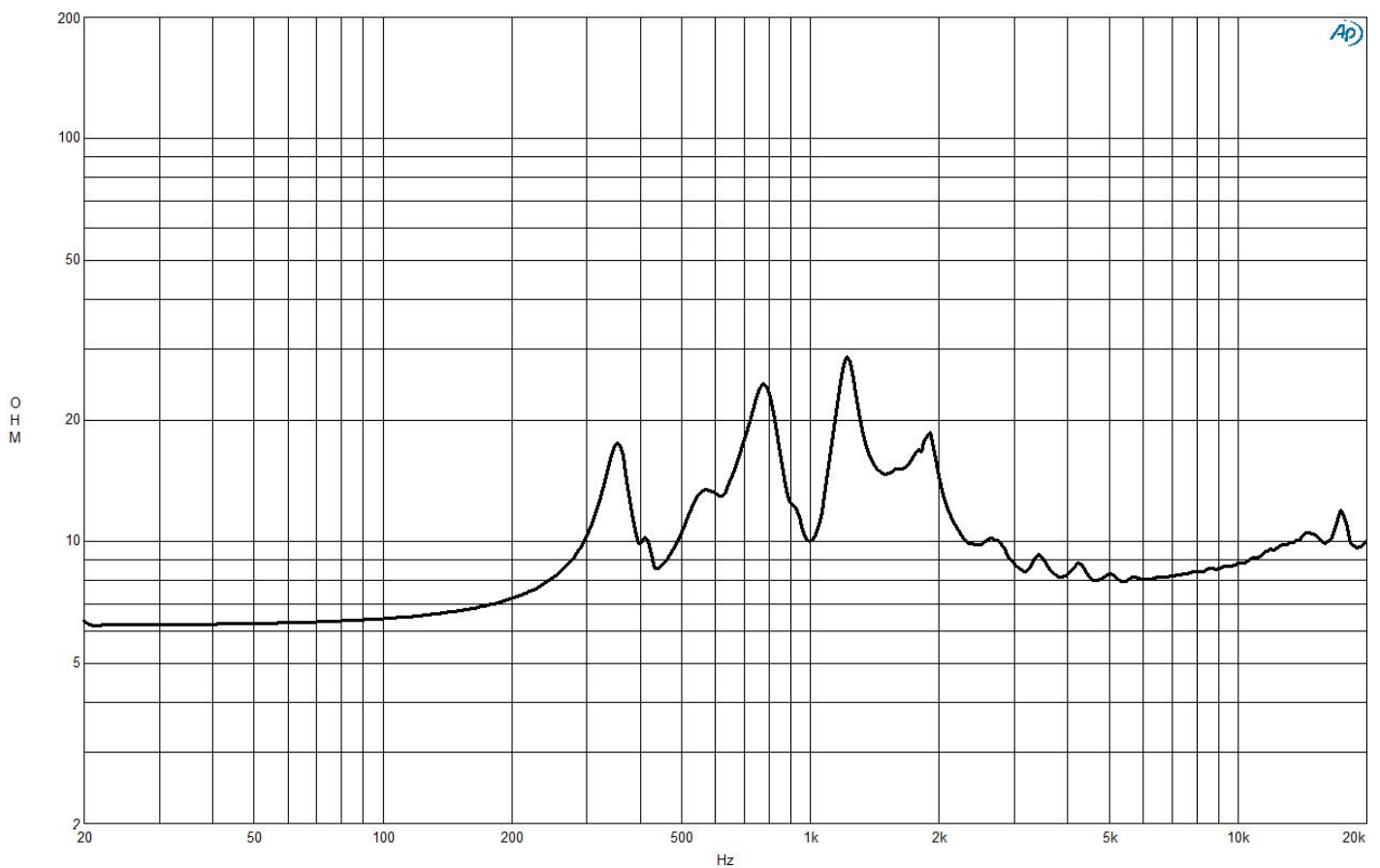
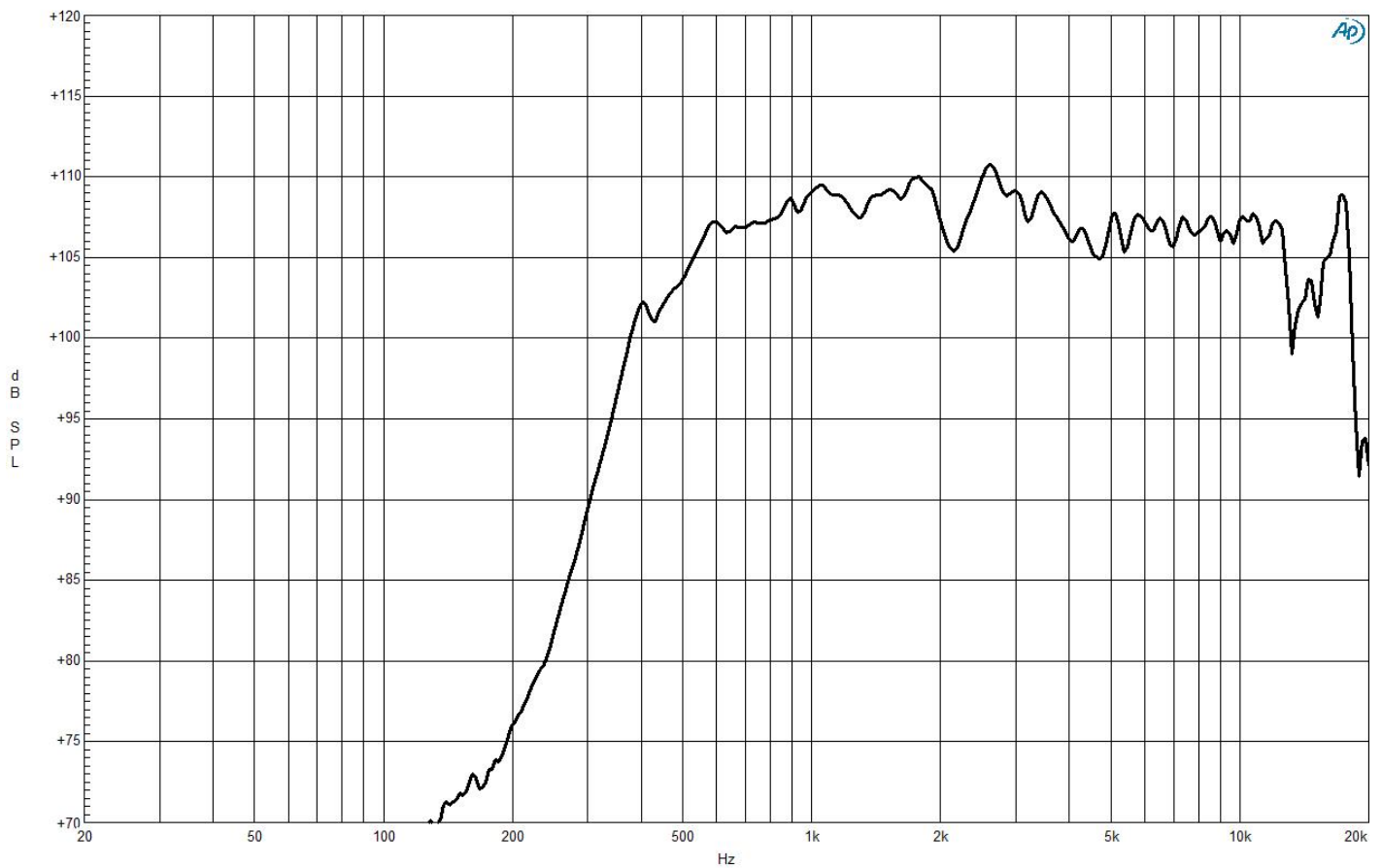
Driver Diameter	<b>131 mm (5.16 in)</b>
-----------------	-------------------------

Dimensions	<b>163x130x235 mm (6.4x5.1x9.3 in)</b>
------------	--

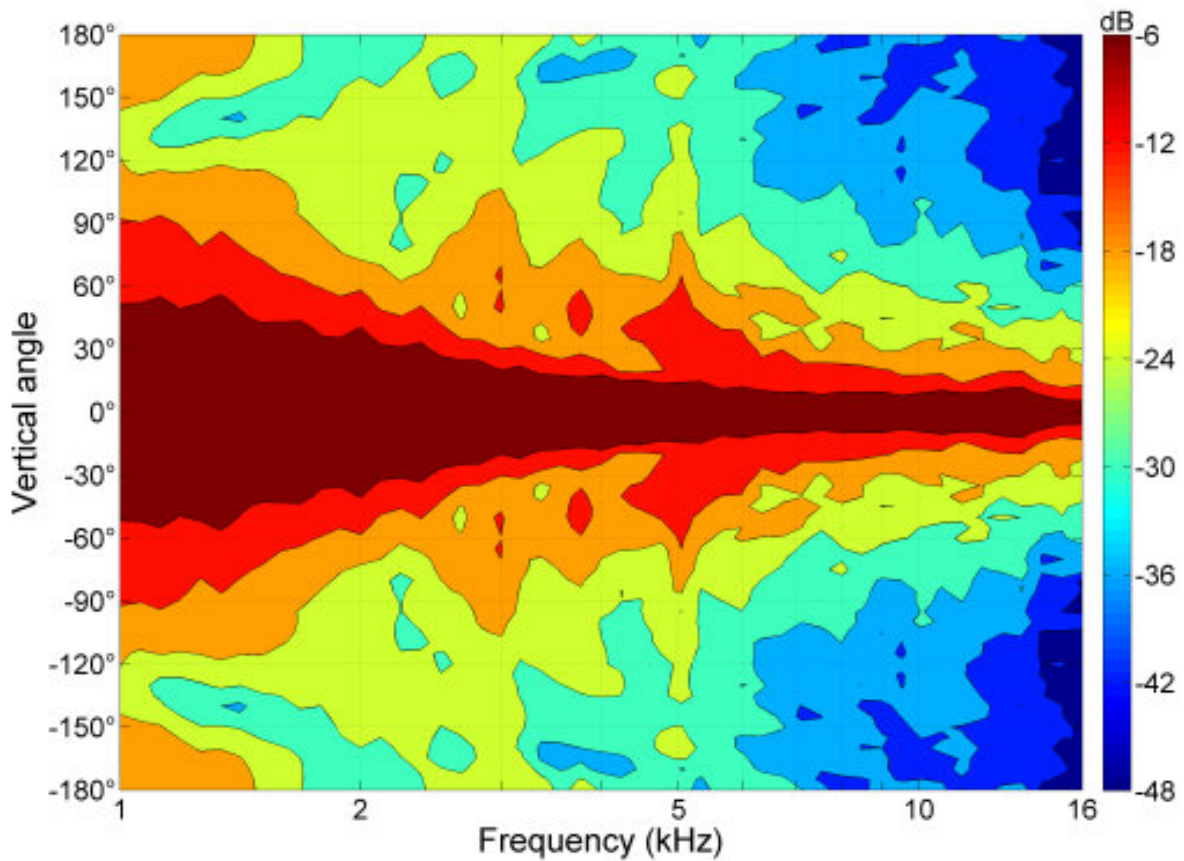
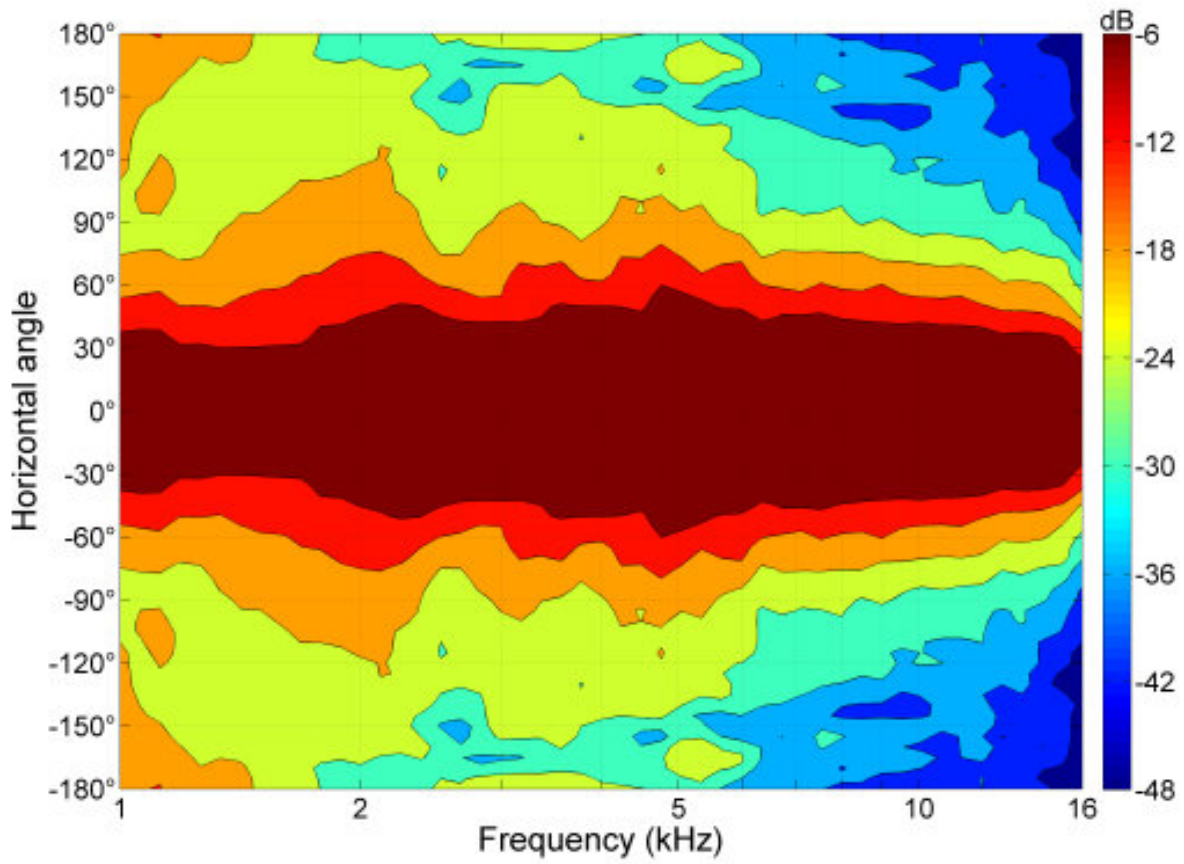
### SERVICE KITS

HF replacement-diaphragm	<b>MMD3DTN8M</b>
--------------------------	------------------

## ME242+980TN 8 Ω



ME242+980TN 8 Ω



# Horn/Driver Combinations

Ø 1.4 inches

**ME242+980TN** 8 Ω

