

ME45

SPECIFICATIONS

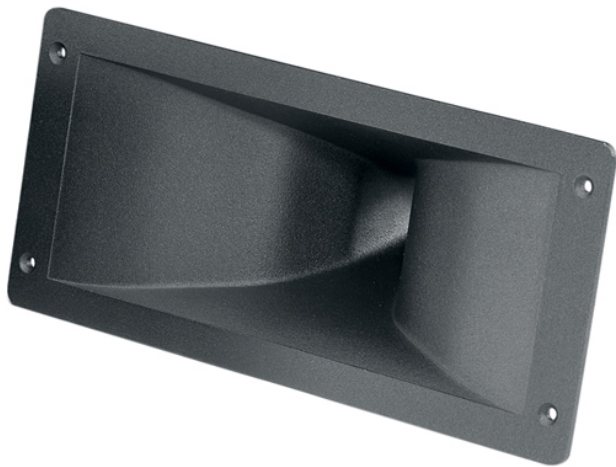
Horn mounted on B&C DE 750 compression driver.

Throat Diameter	25 mm (1 in)
Nominal Coverage Horizontal	90°
Nominal Coverage Vertical	40°
Cutoff Frequency	1 kHz
Material	Cast Aluminium
Dimensions	310x140x124 mm (12.2x5.6x4.9 in)

MOUNTING AND SHIPPING INFO

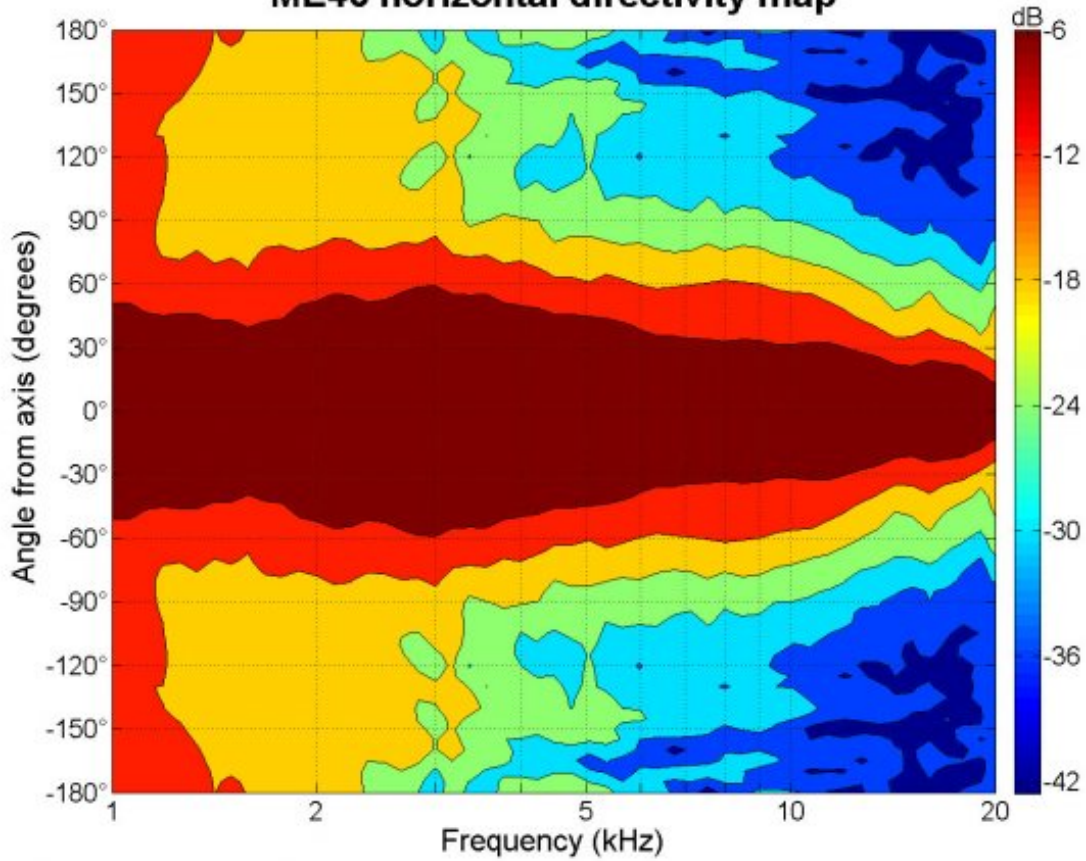
Other details	2x 6.5 mm (0.255 in) holes 180° on 76 mm (3 in) diameter
Baffle Cutout Dimension	260 mm (10.2 in)
Air Volume Occupied by Driver	0.26 dm³ (0.01 ft³)
Net Weight	0.86 kg (1.9 lb)
Shipping Units	1 pcs
Shipping Weight	0.96 kg (2.12 lb)
Shipping Box	320x150x125 mm (12.60x5.91x4.92 in)

- 1" throat entry
- 90° x 40° nominal coverage
- Exponential flare
- Excellent loading down to 1 kHz

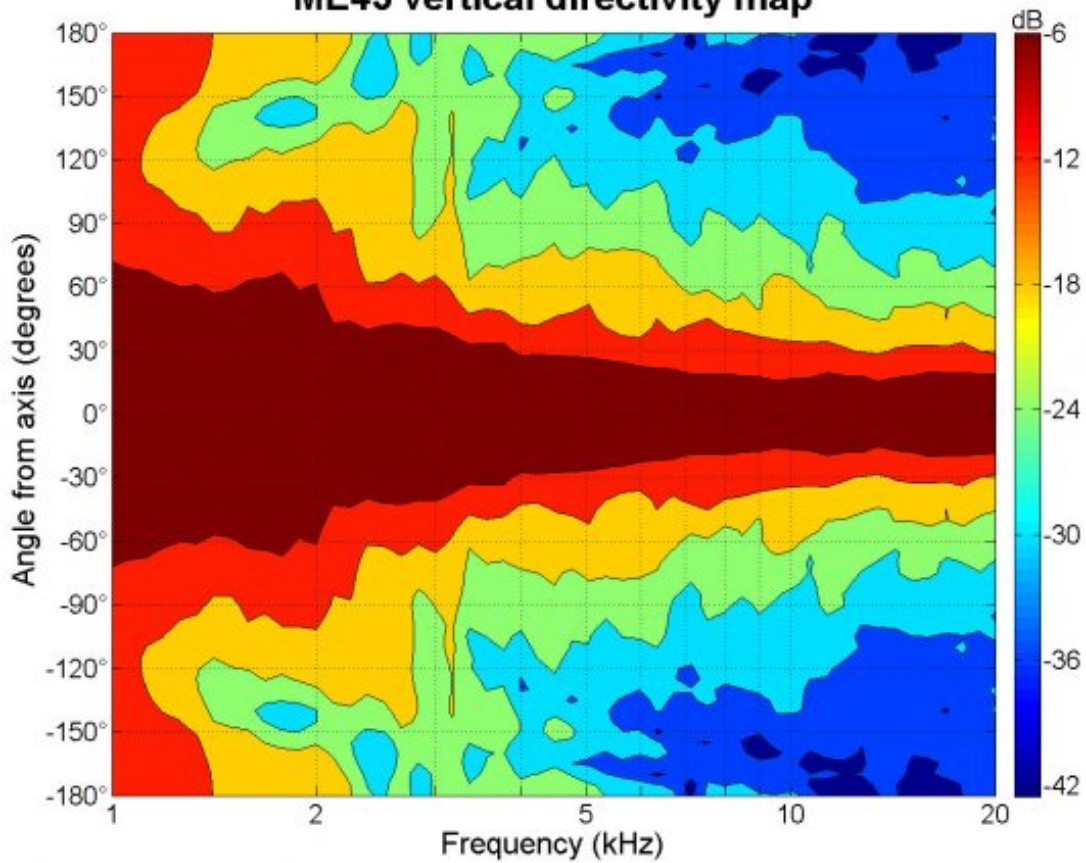


ME45

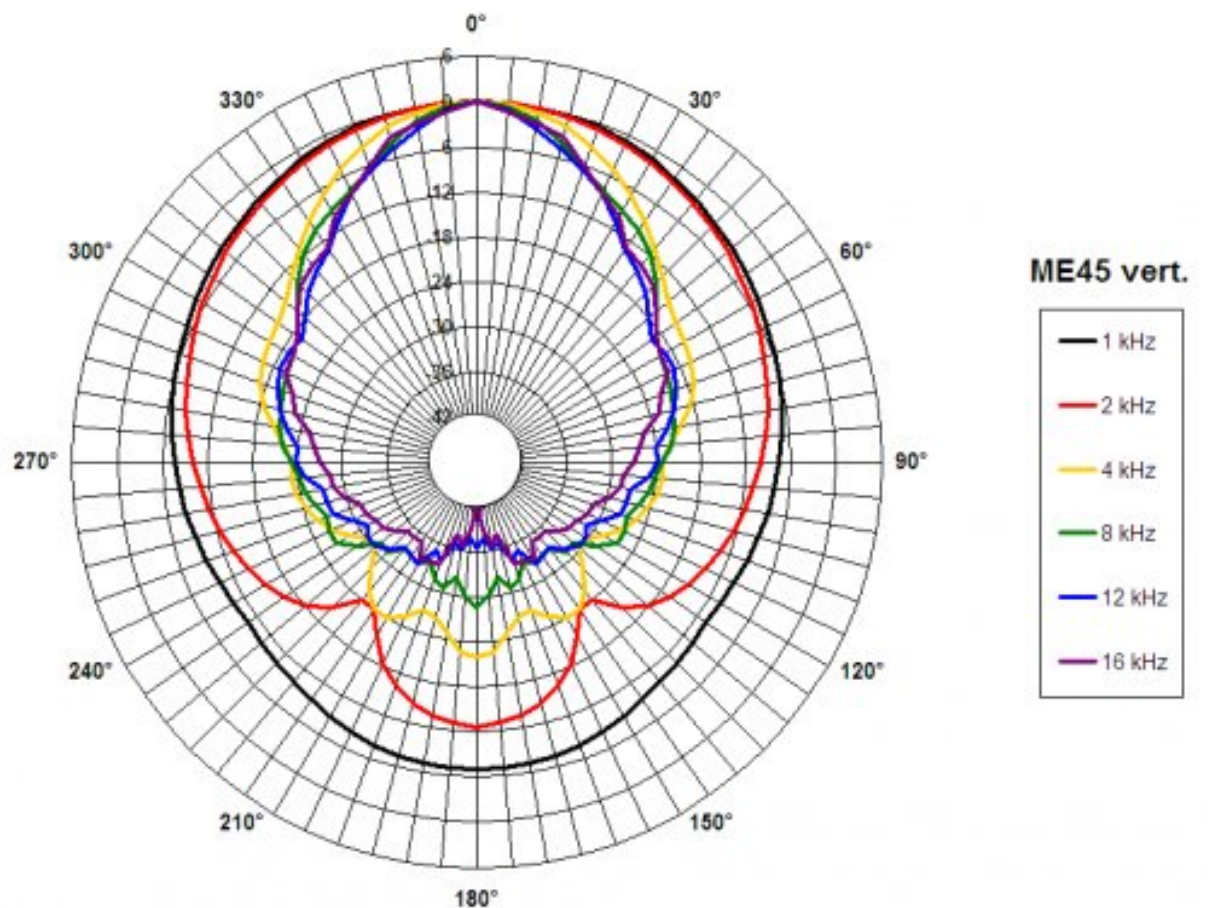
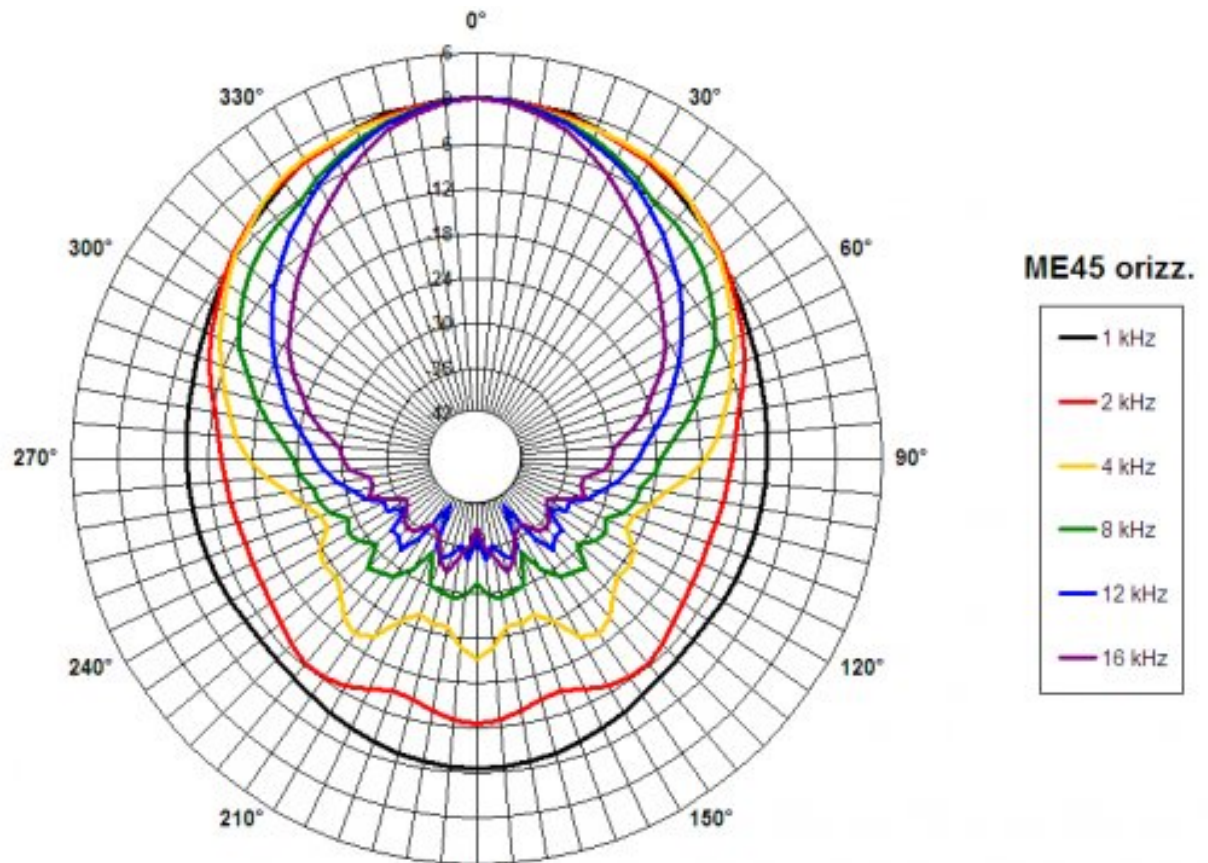
ME45 horizontal directivity map



ME45 vertical directivity map



ME45



ME45

