

ME464+354 8 Ω

- Constant Directivity horn with [DCX354](#) driver and [ME464](#) horn
- Time coherent coaxial ring radiator design
- 80x60° nominal coverage
- 110.1 dB sensitivity
- 180 W continuous program power capacity
- Neodymium magnet assembly
- Recommended hardware for horn mounting: four M6x12 screws
- revised 20/10/20



ME464+354 8 Ω

SPECIFICATIONS HORN UNIT

Nominal Impedance	8 Ω
Nominal Coverage Horizontal	80 °
Nominal Coverage Vertical	60 °
Cutoff Frequency	0.3 kHz

SPECIFICATIONS HF UNIT

Minimum Impedance	6.5 Ω
Nominal Power Handling	50 W
<small>2 hour test made with continuous pink noise signal (6 dB crest factor) within the range from the recommended crossover frequency to 20 kHz. Power calculated on rated minimum impedance.</small>	
Continuous Power Handling	100 W
<small>Power on Continuous Program is defined as 3 dB greater than the Nominal rating.</small>	
Sensitivity	107 dB
<small>Applied RMS Voltage is set to 2.83 V for 8 ohms Nominal Impedance.</small>	
Frequency Range	5 kHz - 20 kHz
Recommended Crossover	4.5 kHz
<small>12 dB/oct. Or higher slope high-pass filter.</small>	
Voice Coil Diameter	51 mm (2 in)
Winding Material	Aluminium
Inductance	0.1 mH
Flux Density	1.96 T
Diaphragm Material	HT Polymer Ring

SPECIFICATIONS MF UNIT

Minimum Impedance	7.9 Ω
Nominal Power Handling	90 W
<small>AES Standard</small>	
Continuous Power Handling	180 W
<small>Power on Continuous Program is defined as 3 dB greater than the Nominal rating.</small>	
Sensitivity	110.1 dB
<small>Applied RMS Voltage is set to 2.83 V for 8 ohms Nominal Impedance.</small>	
Frequency Range	0.4 kHz - 6 kHz
Recommended Crossover	0.4 kHz
<small>12 dB/oct. Or higher slope high-pass filter.</small>	
Voice Coil Diameter	76 mm (3 in)
Winding Material	Aluminum
Inductance	0.26 mH
Flux Density	1.93 T
Diaphragm Material	HT Polymer Ring

MOUNTING AND SHIPPING INFO

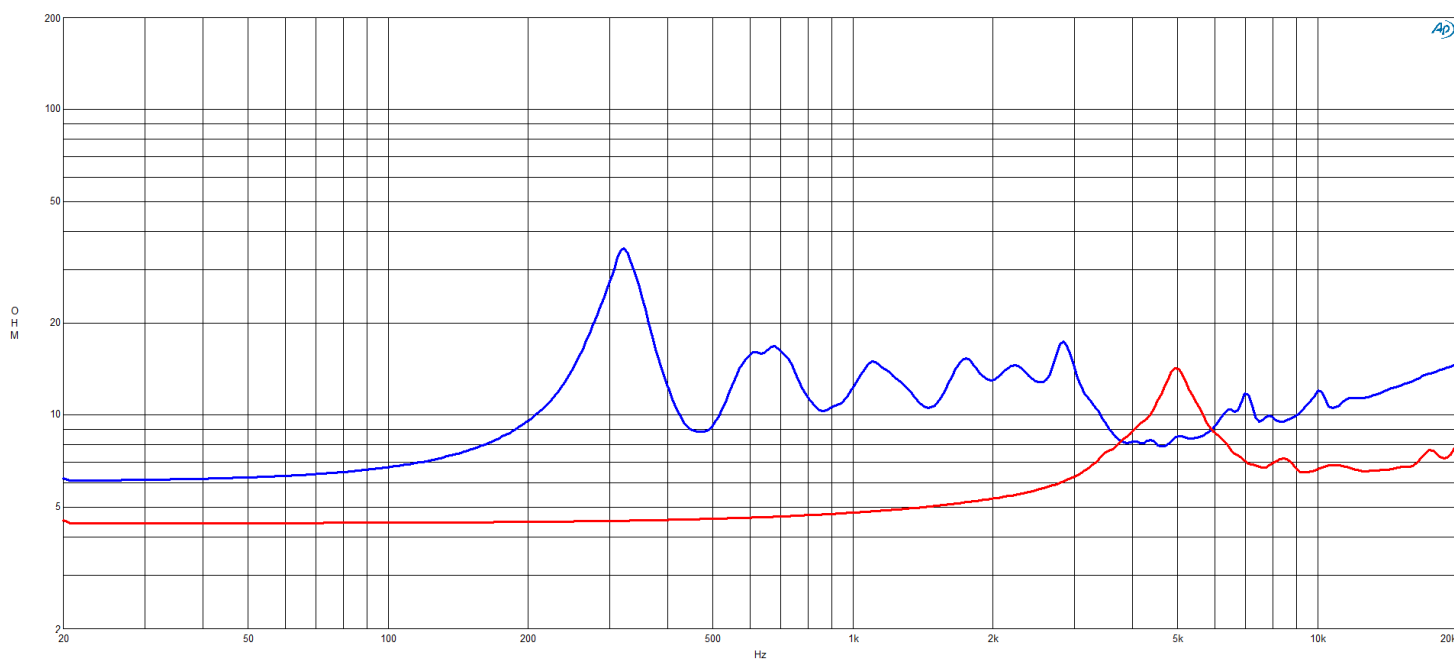
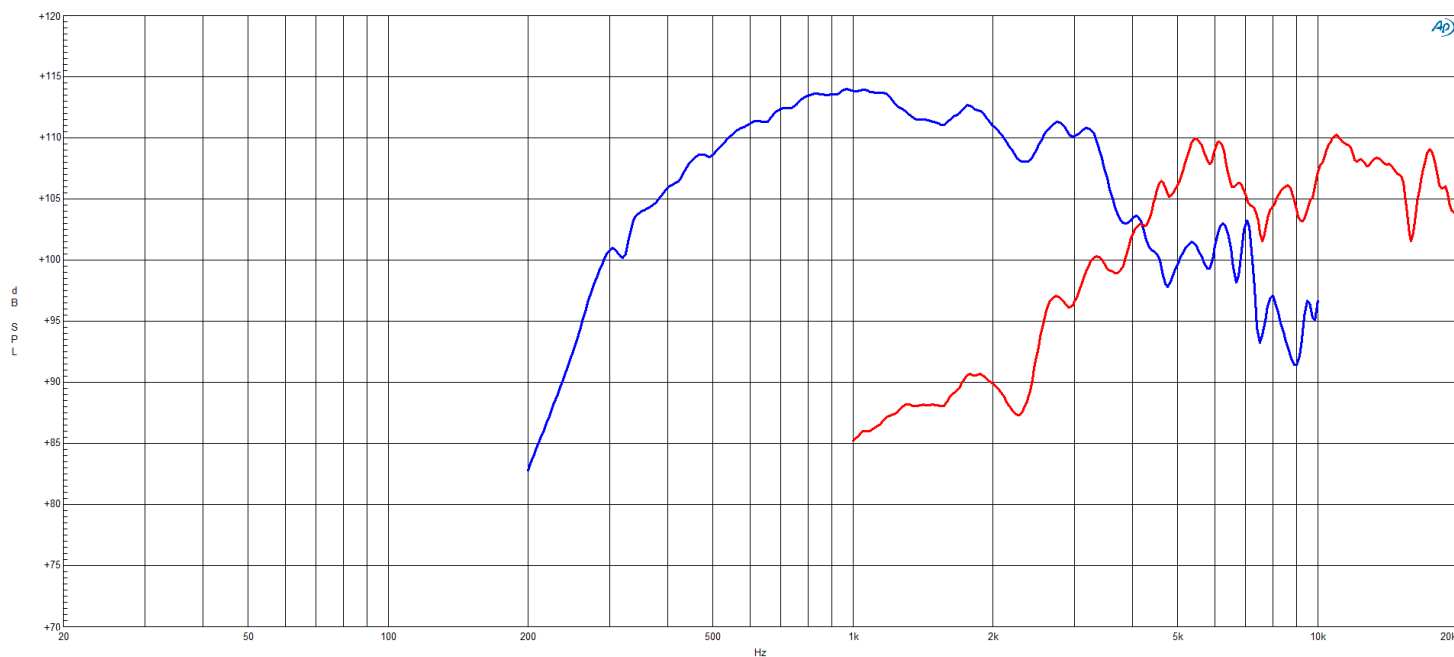
Recommended hardware for horn mounting: four M6x12 screws

Baffle Cutout Diameter	538 mm (21.18 in)
Net Weight	7.3 kg (16.09 lb)
Driver Diameter	130 mm (5.12 in)
Dimensions	575x505x535 mm (22.64x19.88x21.06 in)

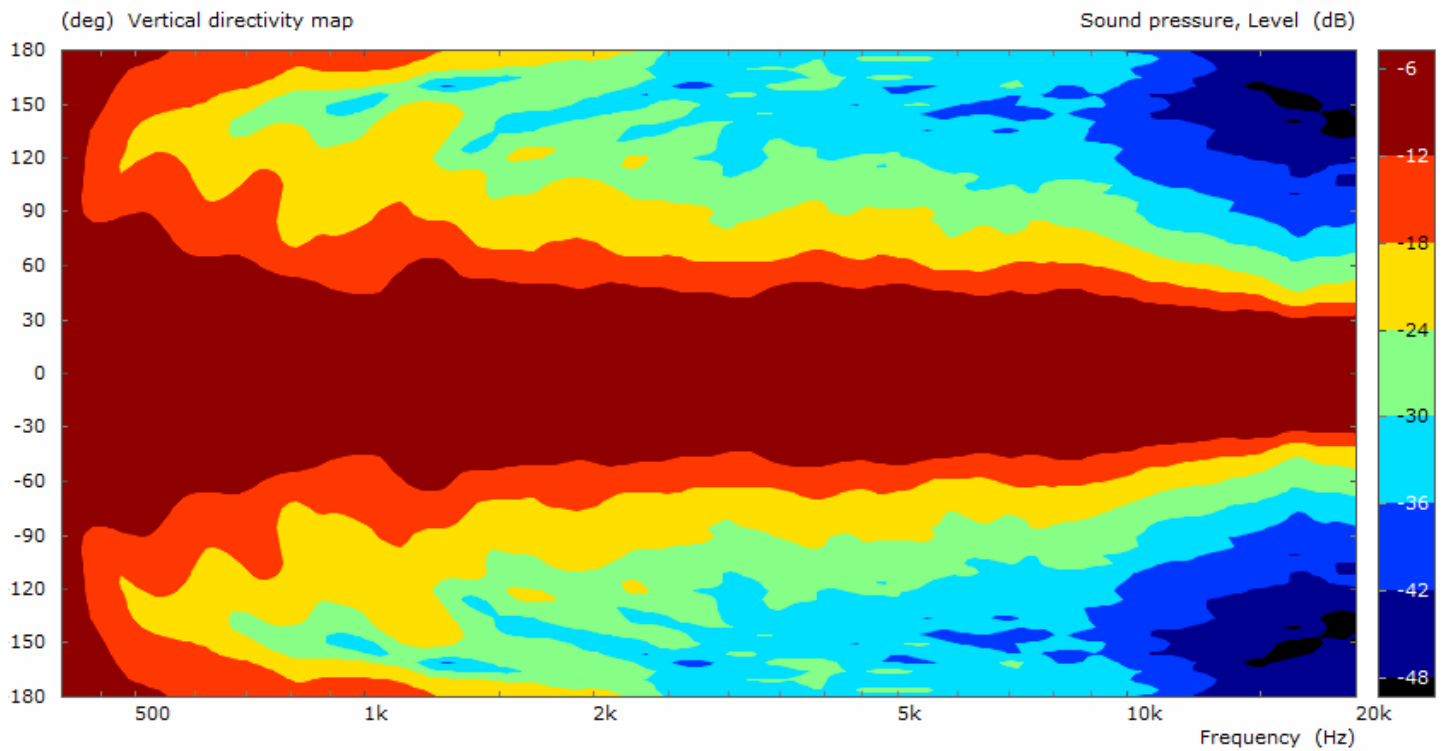
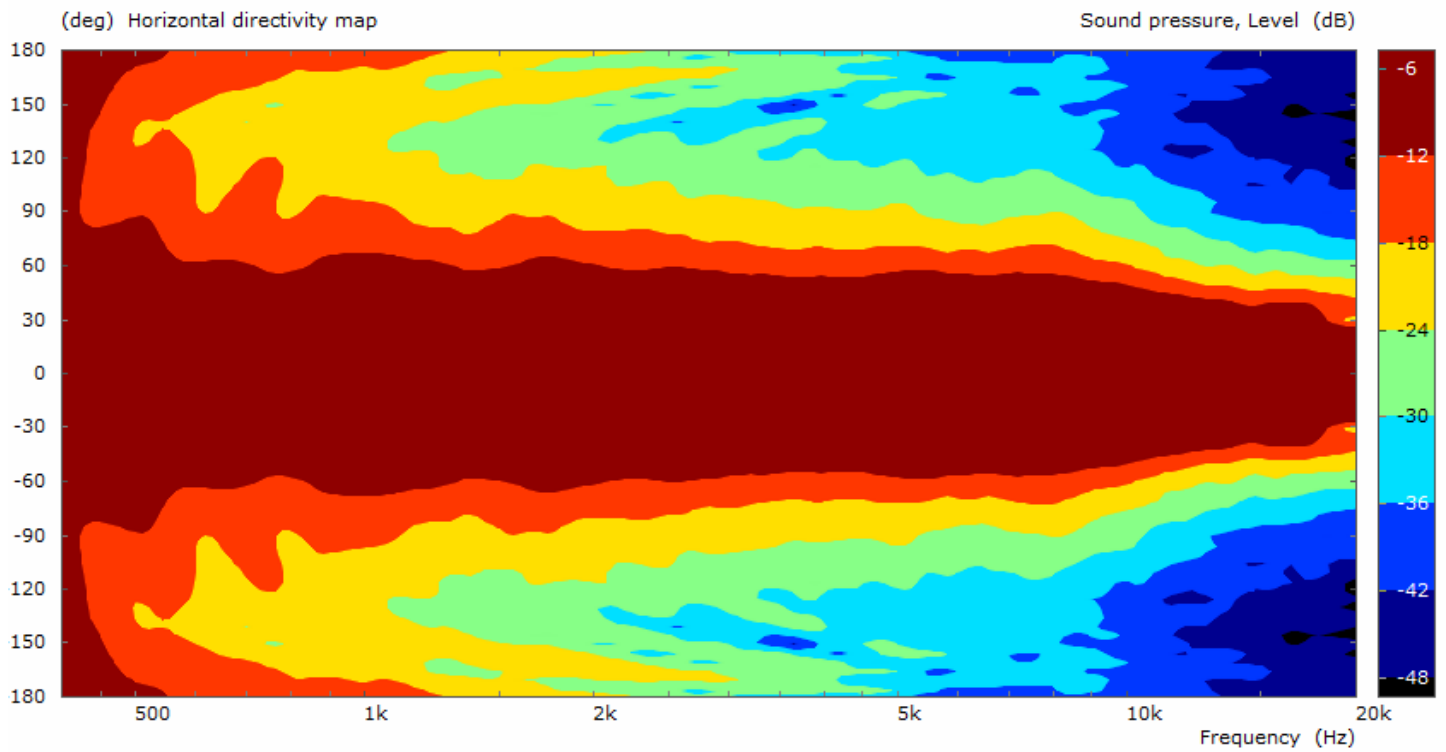
SERVICE KITS

HF replacement-diaphragm	MMDDCX354HF8
MF replacement-diaphragm	MMDDCX354MF8

ME464+354 8 Ω

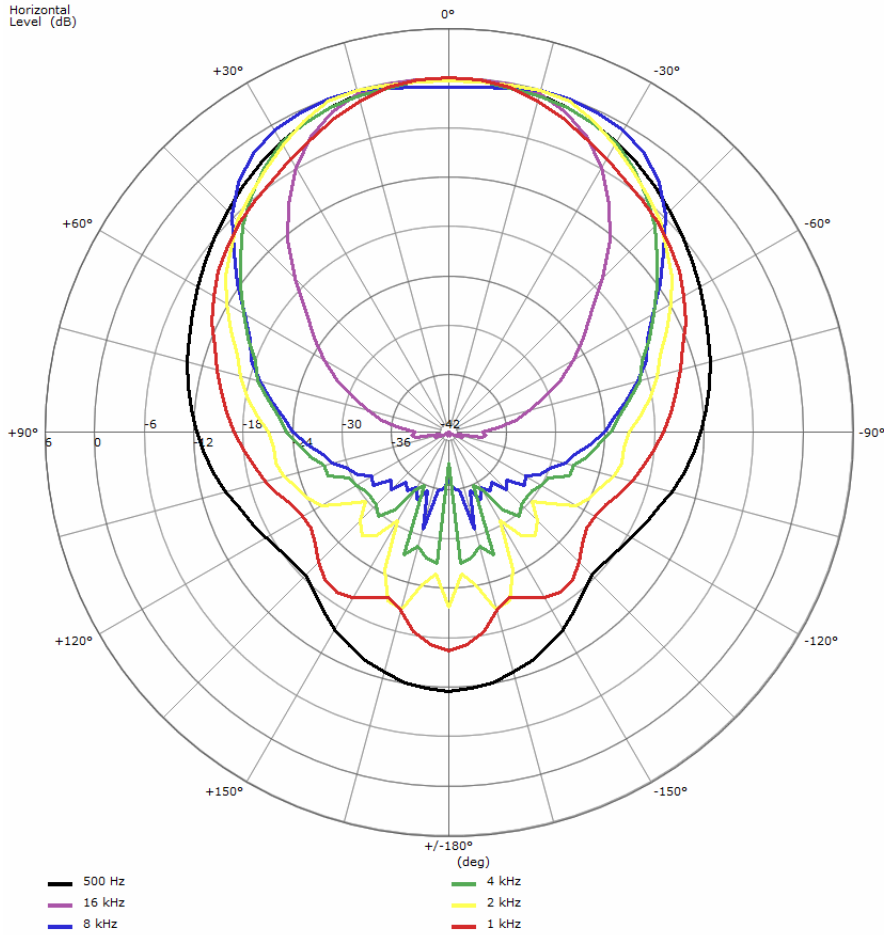


ME464+354 8 Ω

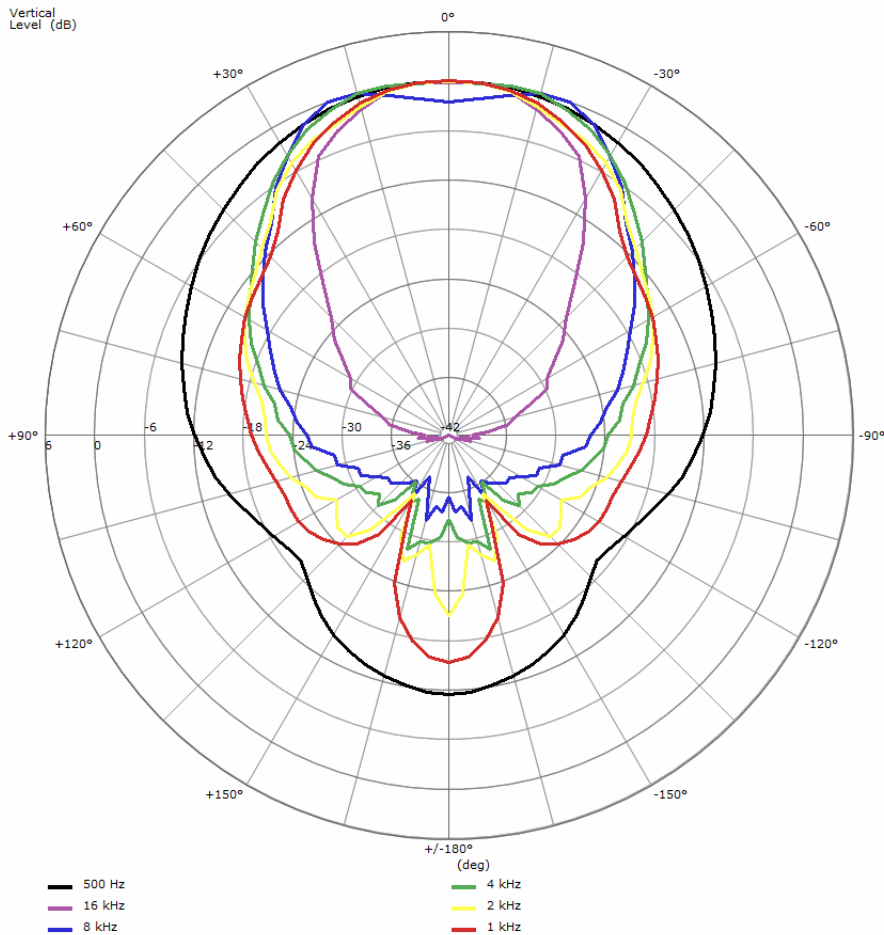


ME464+354 8 Ω

Horizontal Level (dB)



Vertical Level (dB)



Horn/Driver Combinations

Ø 1.4 inches

ME464+354 8 Ω

